



Excess Mortality of Young Men - Cohort Analysis

Petr Mazouch

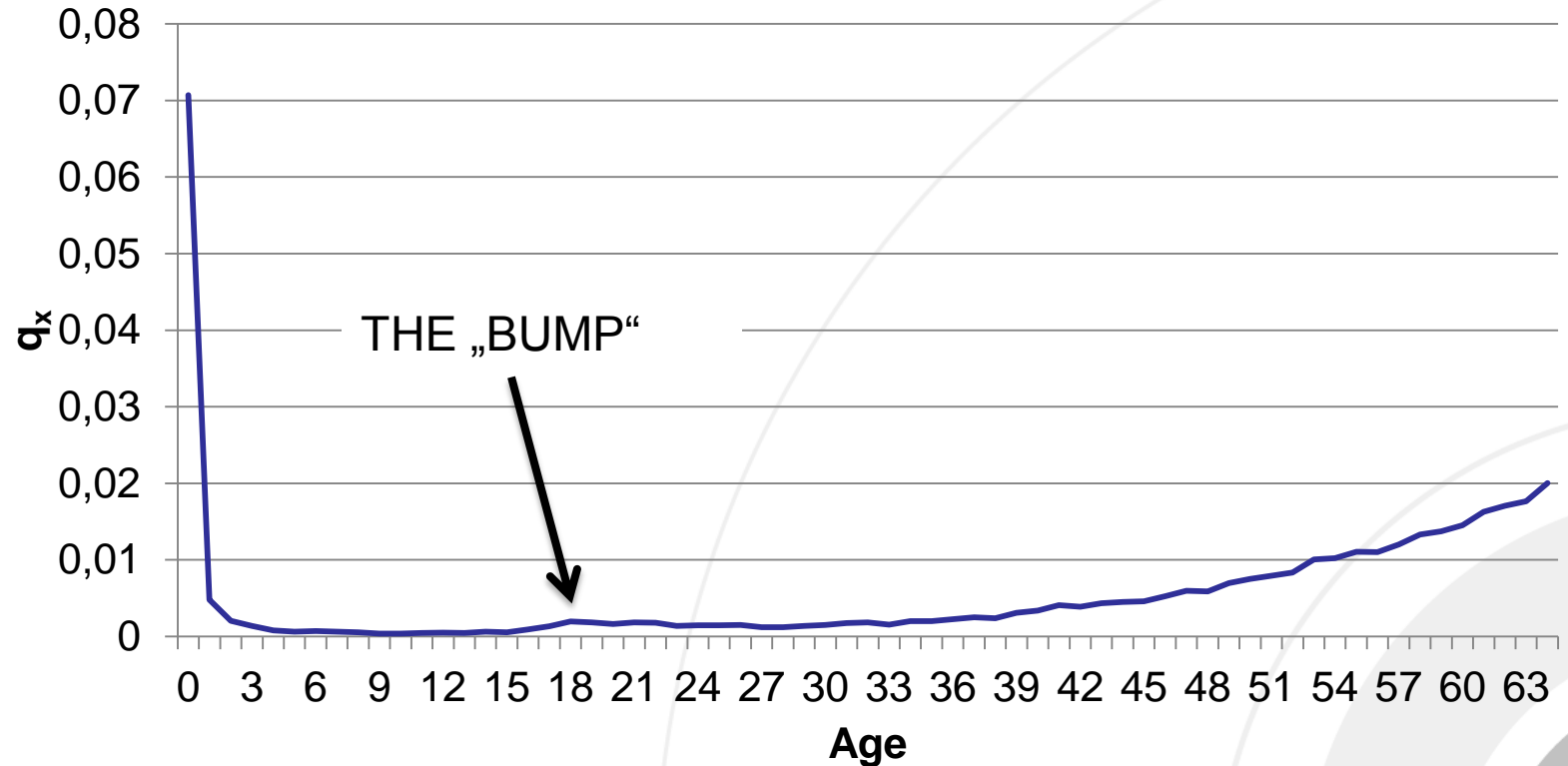
University of Economics, Prague

Dept. of Economic Statistics

Introduction

- Young adult excess mortality (YAEM) – well known demographic fact
- Deeply studied by Remund (2014) or Remund and Camarda (2015) or Vaupel and Yashin (1985 or 2006)
- Causes still unclear
- Is the „bump“ still here?
- Is it remarkable in cohort perspective?

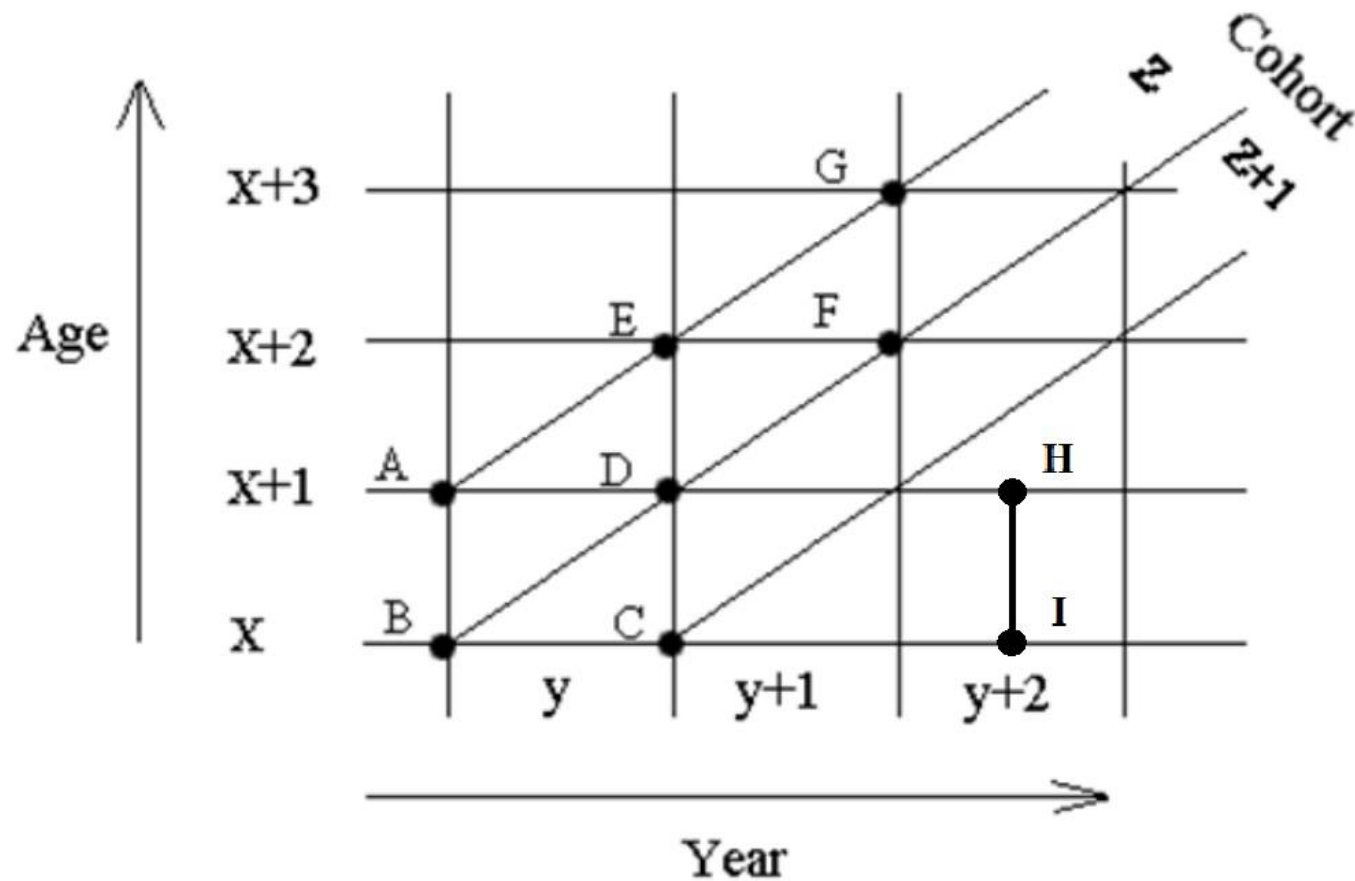
Probability of dying, CZ, males, cohort 1950



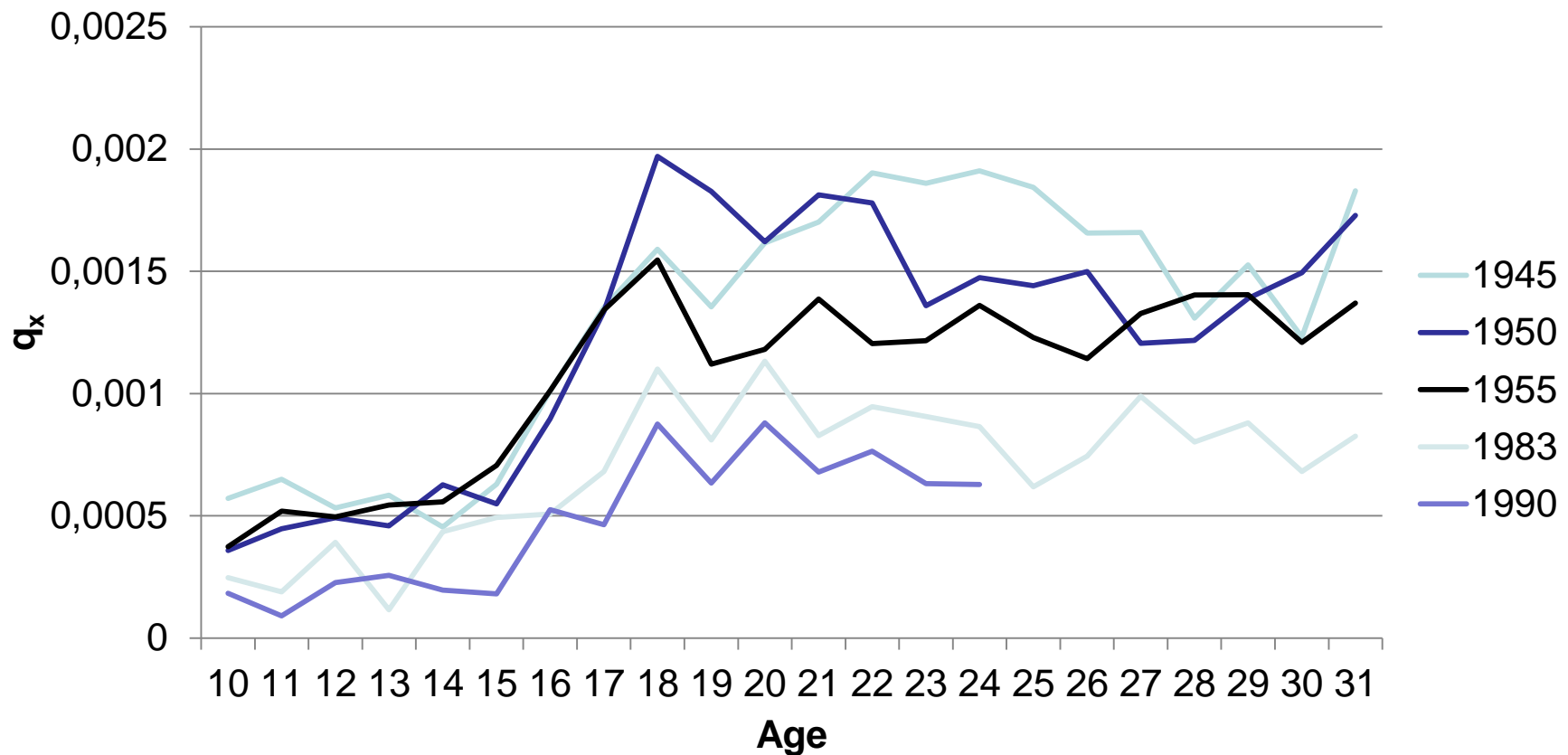
Data

- HMD (www.mortality.org)
- Czech Republic
- Cohorts 1936-1984
- Age 10-31

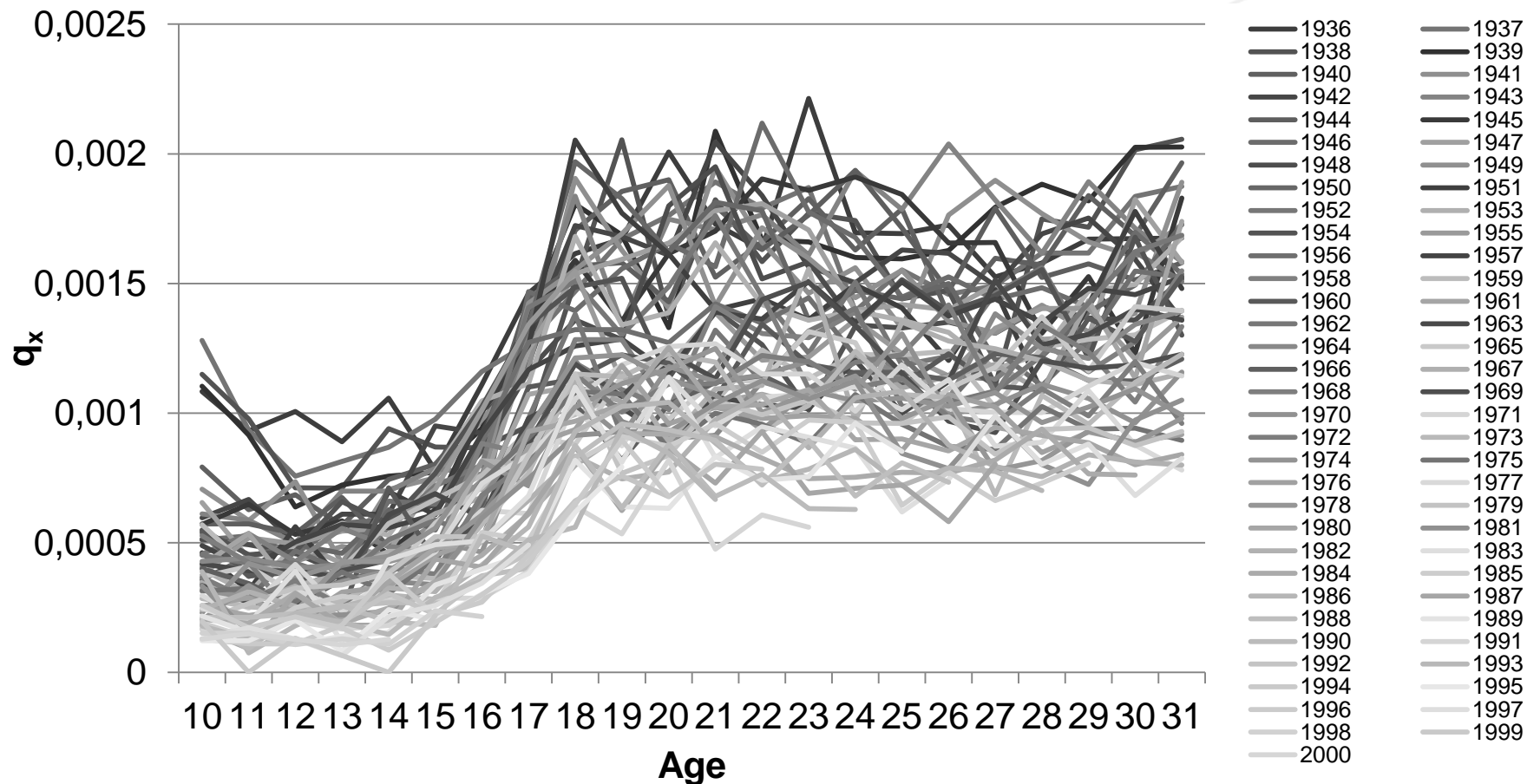
Lexis diagram



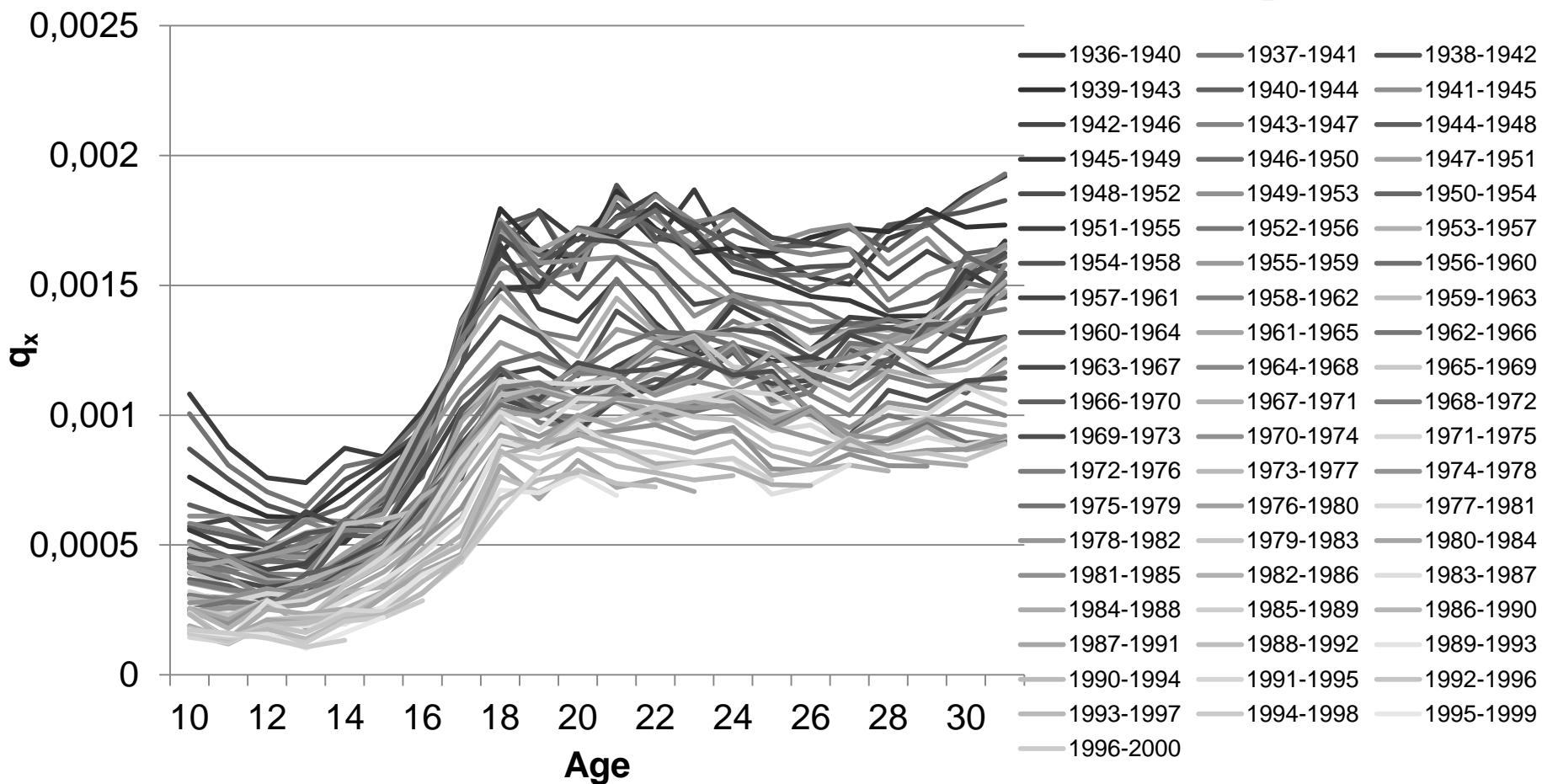
Probability of dying, CZ, males, cohorts 1945, 1950, 1955, 1983, 1990



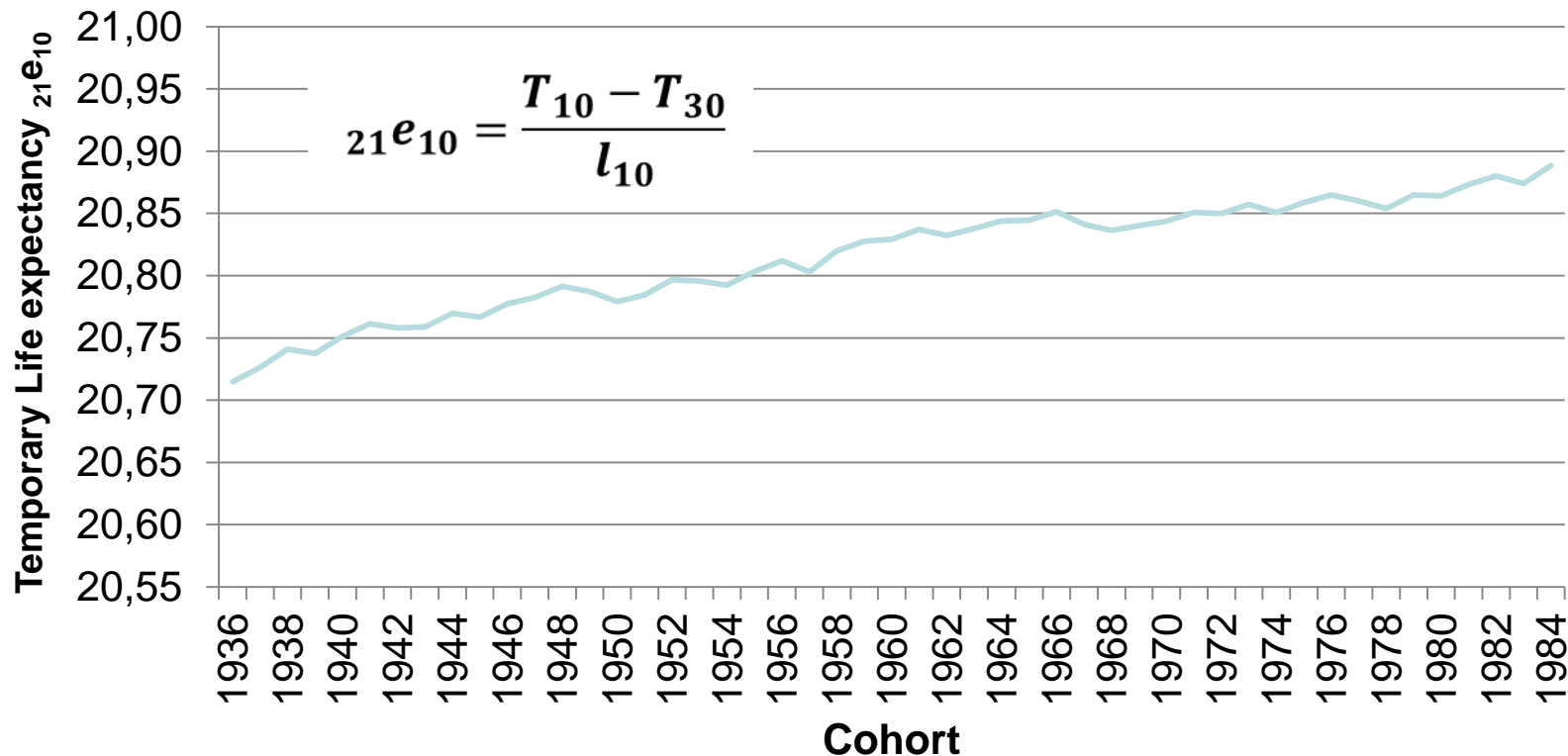
Probability of dying, CZ, males, cohorts 1945-1999



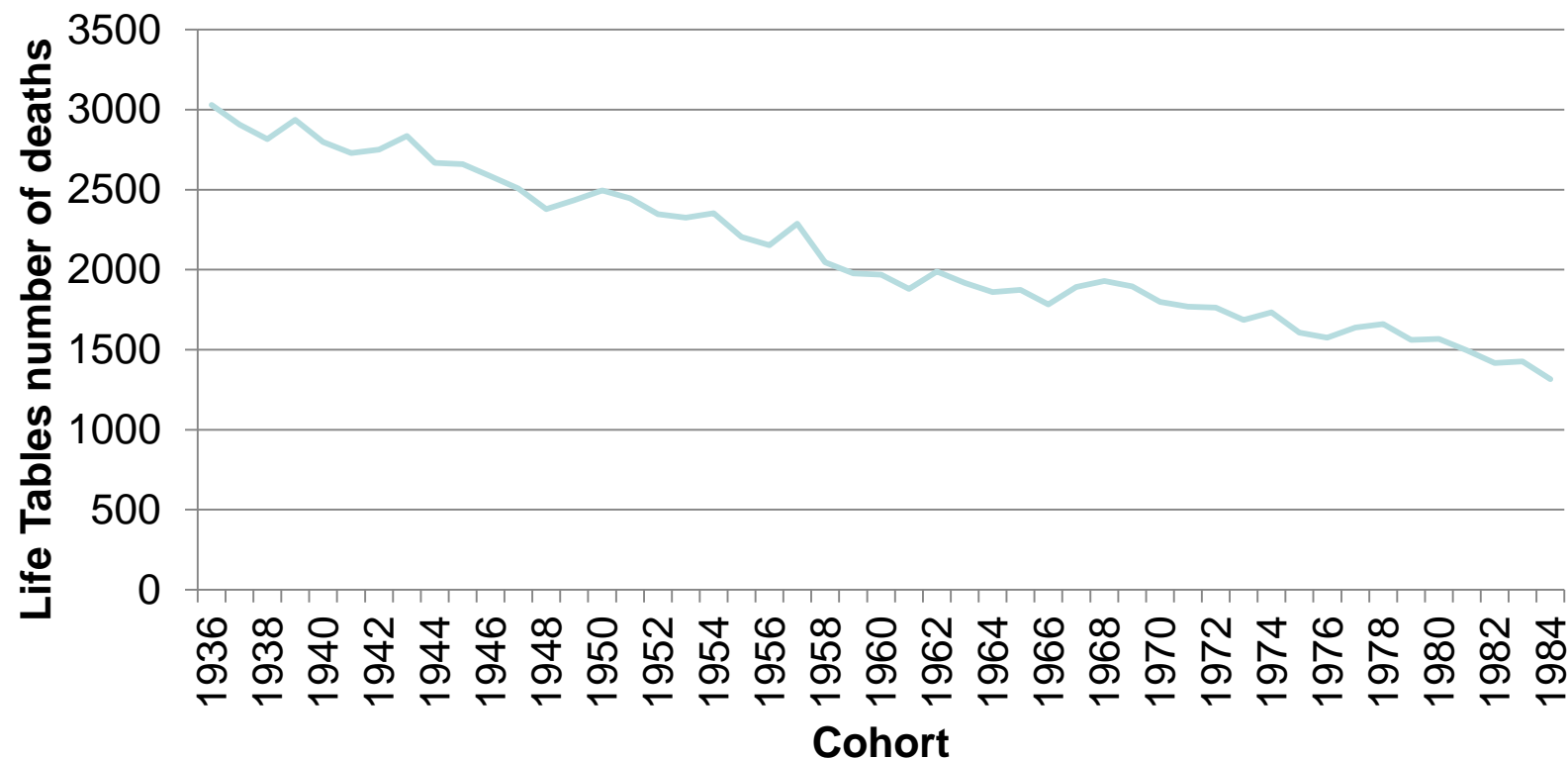
Probability of dying, CZ, males, cohorts 1945-1999, 5-year moving averages



Temporary Life Expectancy ${}_{21}e_{10}$, males, CZ, cohorts 1936-1984



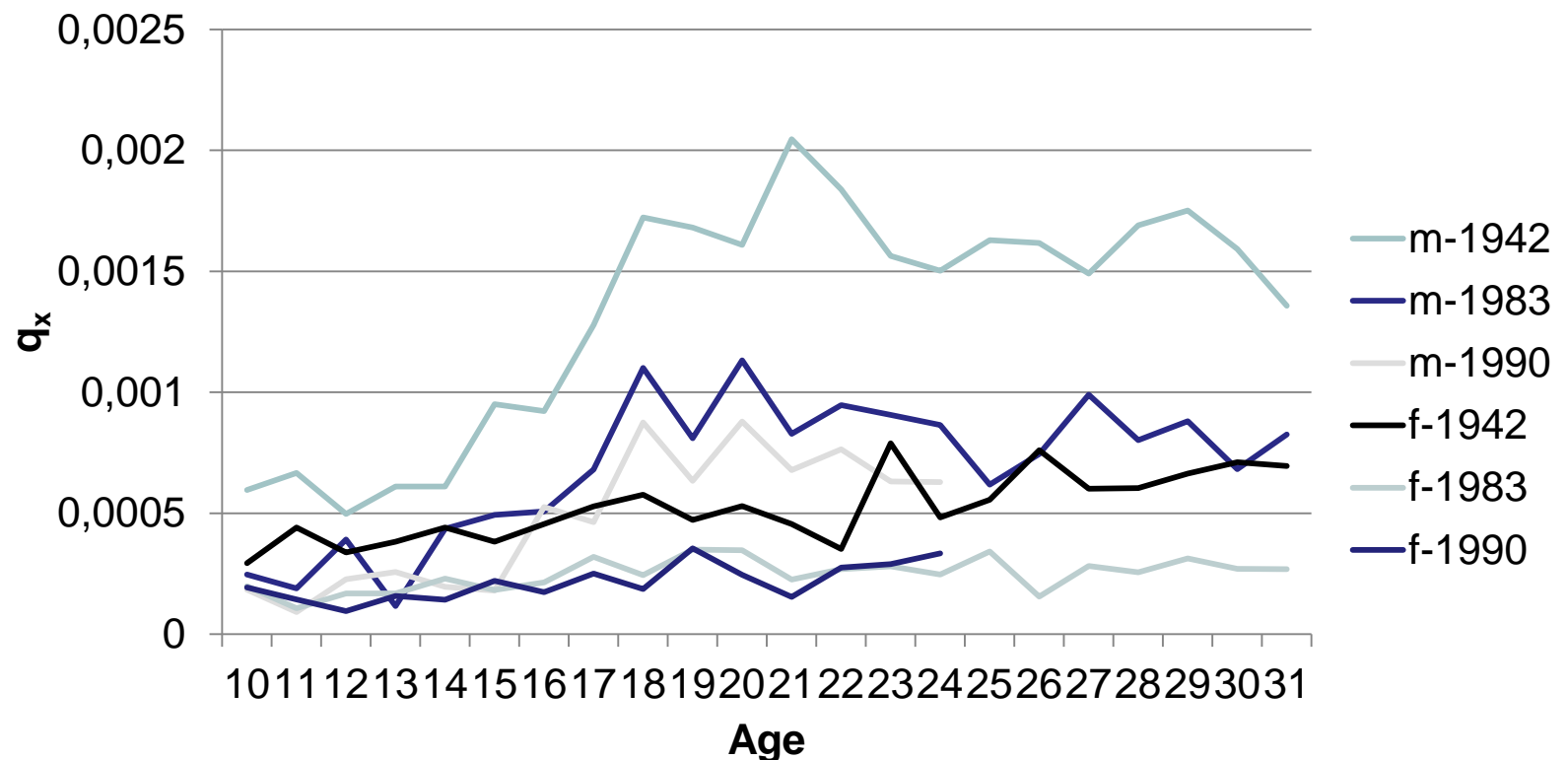
Life Tables number of deaths between age 10 and 31, $l_{10}=100,000$, CZ, males, cohorts 1936-1984



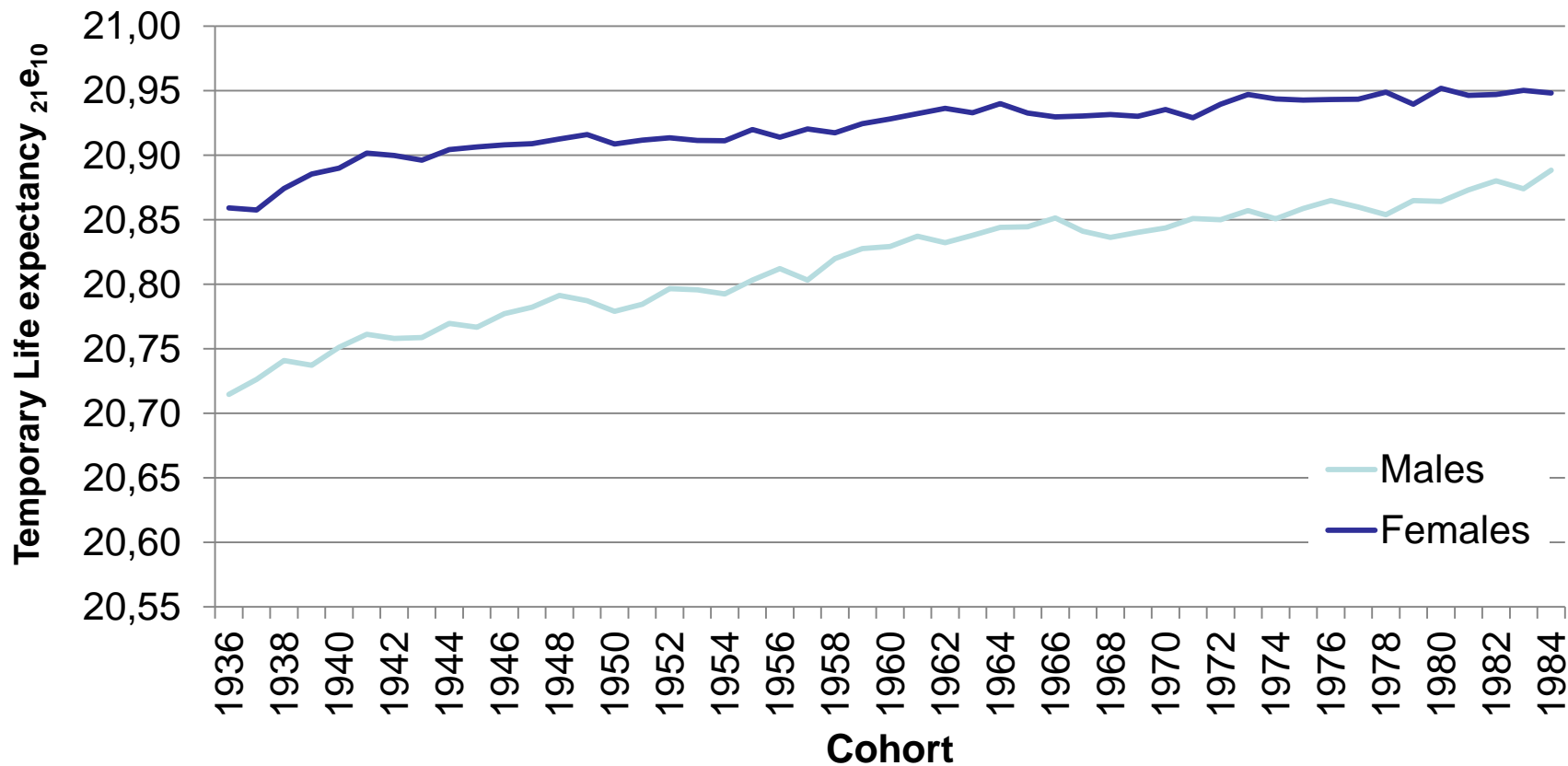
What about females?



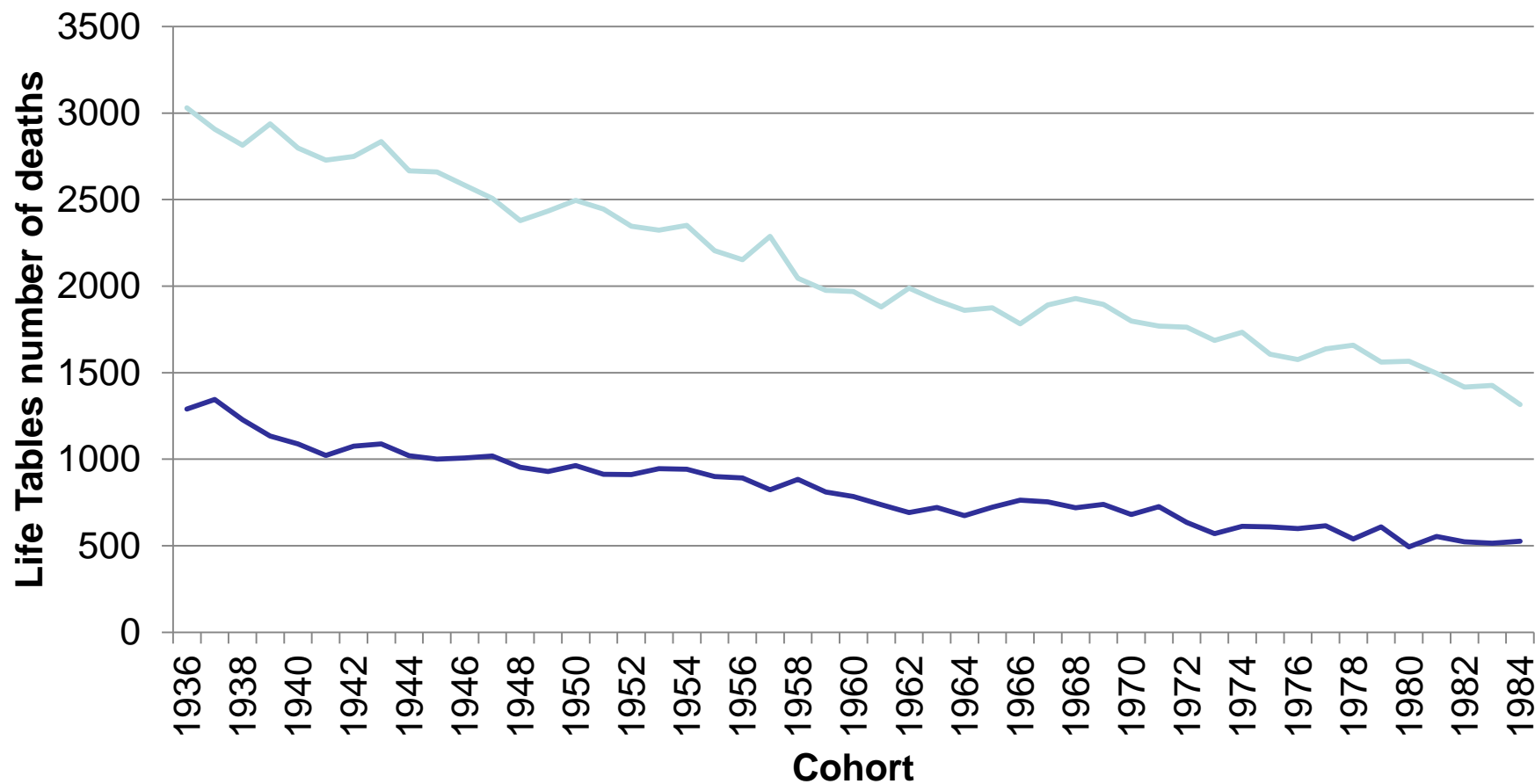
Probability of dying, CZ, males, females, cohorts 1942, 1983, 1990



Temporary Life Expectancy ${}_{21}e_{10}$, males, females, CZ, cohorts 1936-1984



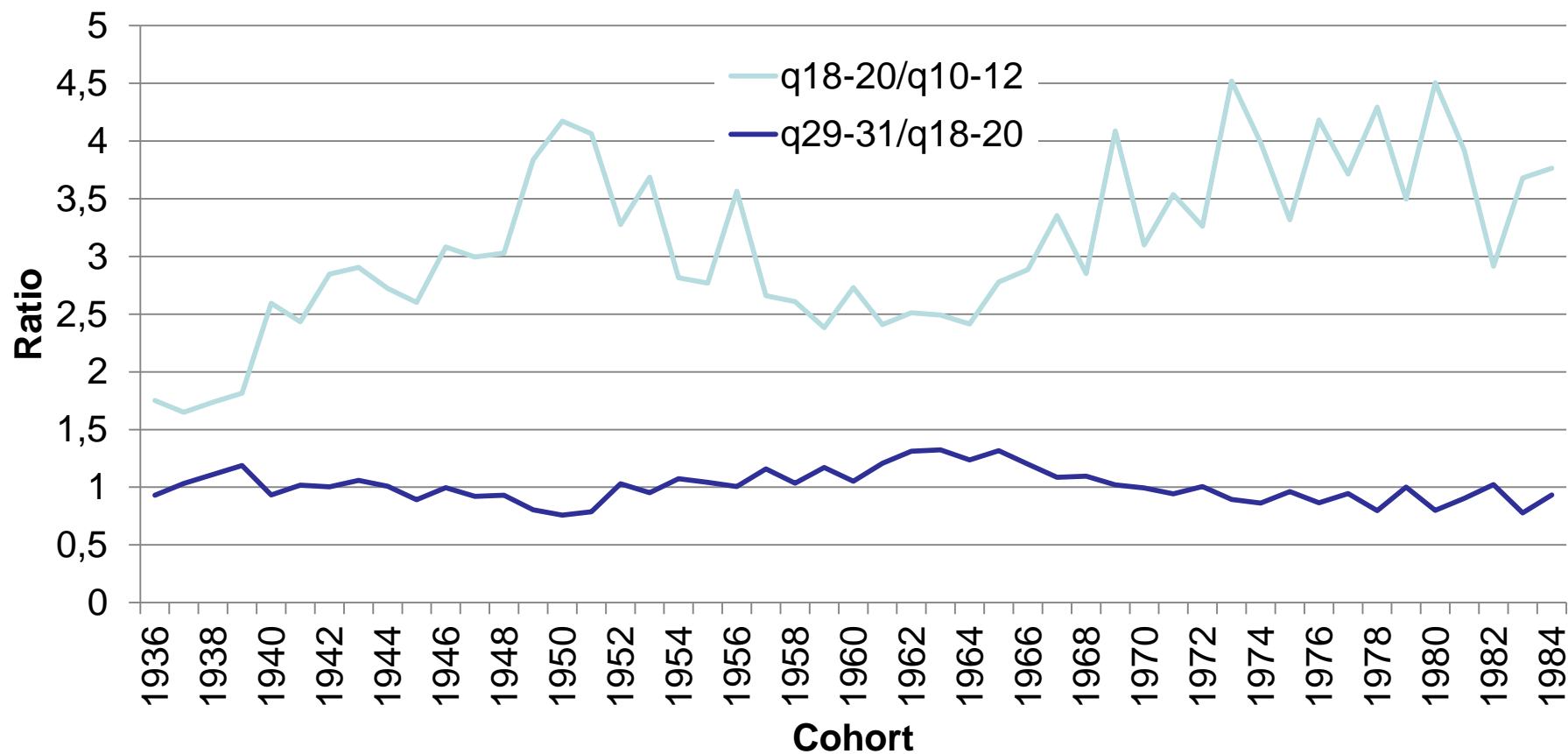
Life Tables number of deaths between age 10 and 31, $l_{10}=100,000$, CZ, males, females, cohorts 1936-1984



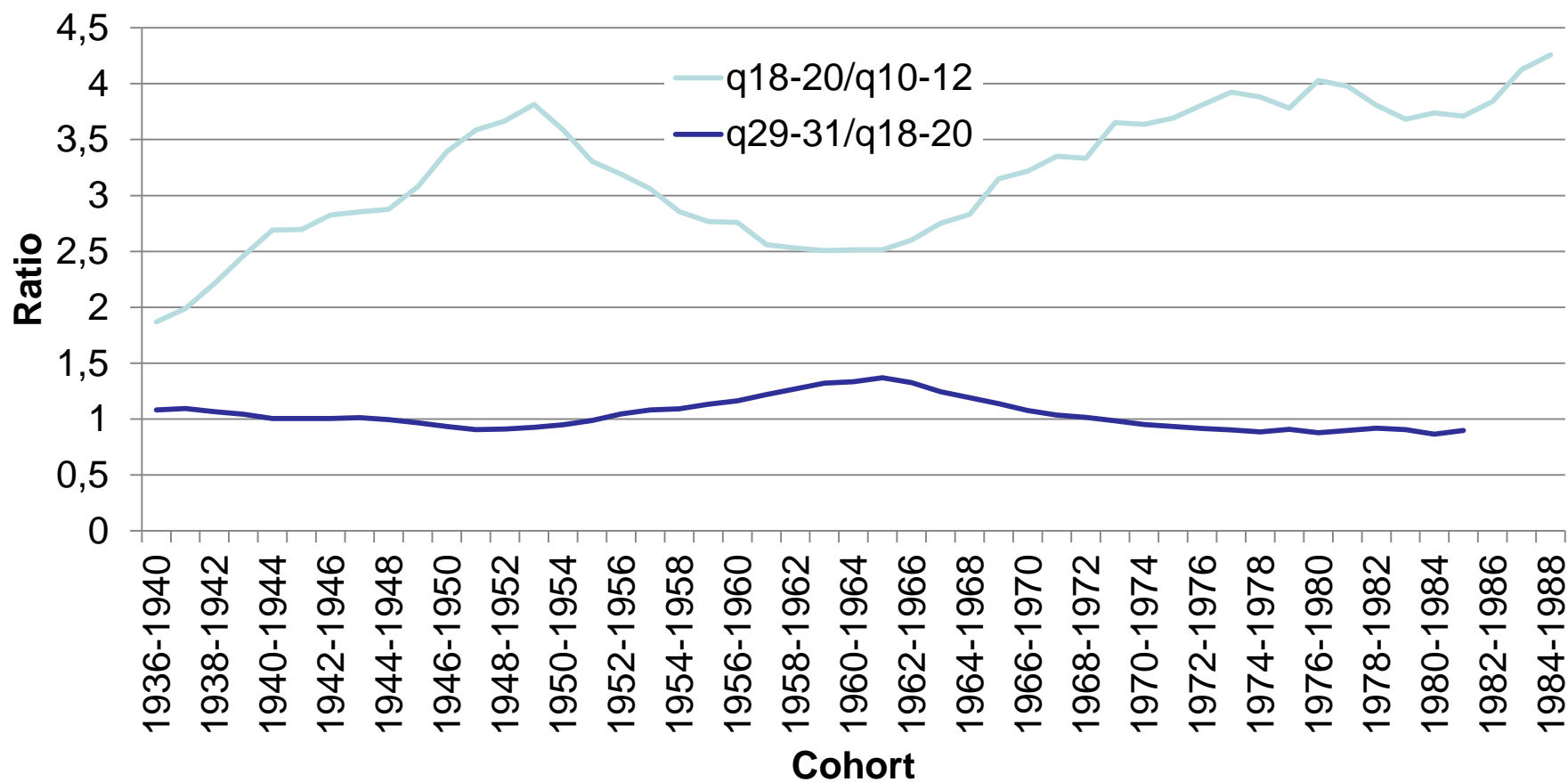
**It seems that „bump“ is
not here anymore.**

But is that true?

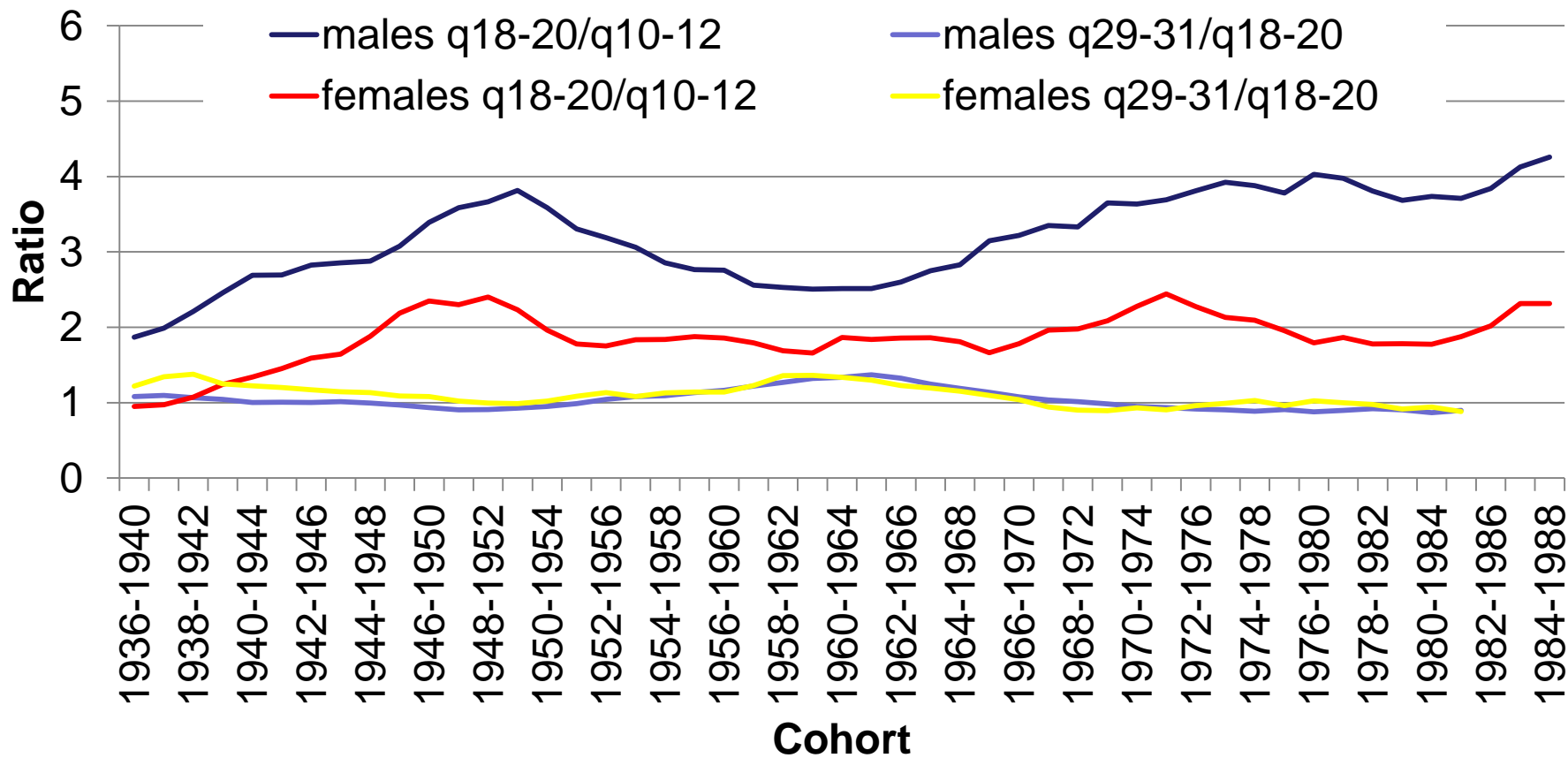
Index of increases of mortality between age 10-12 to 18-20 and 18-20 and 28-31, males, CZ, cohorts 1936-1984



Index of increases of mortality between age 10-12 to 18-20 and 18-20 and 28-31, males, CZ, cohorts 1936-1984, moving average



Index of increases of mortality between age 10-12 to 18-20 and 18-20 and 28-31, males, females, CZ, cohorts 1936-1984, moving average



Petr Mazouch
mazouchp@vse.cz

