

Early stages of the **common myna** (*Acridotheres tristis*) invasion in Kruger National Park

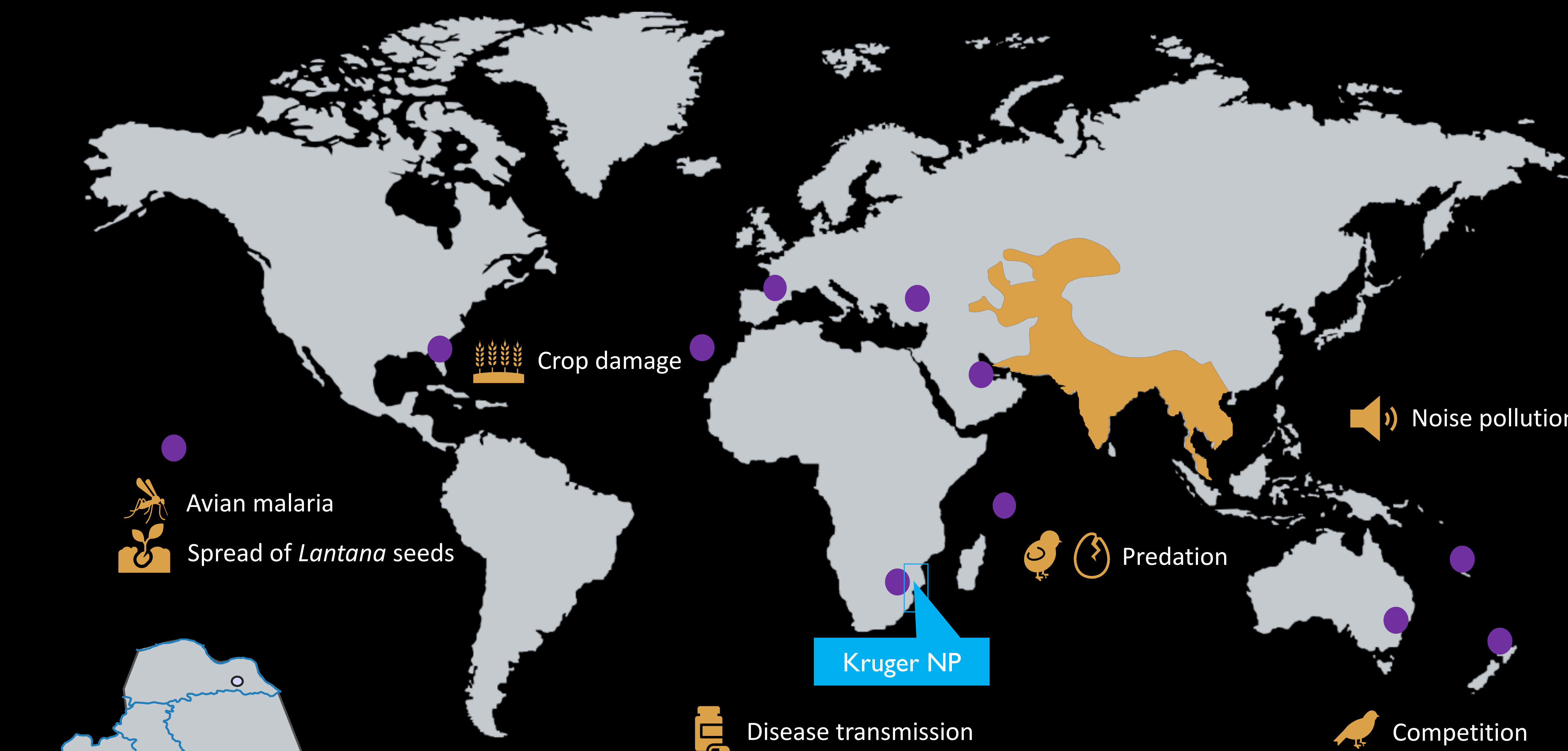
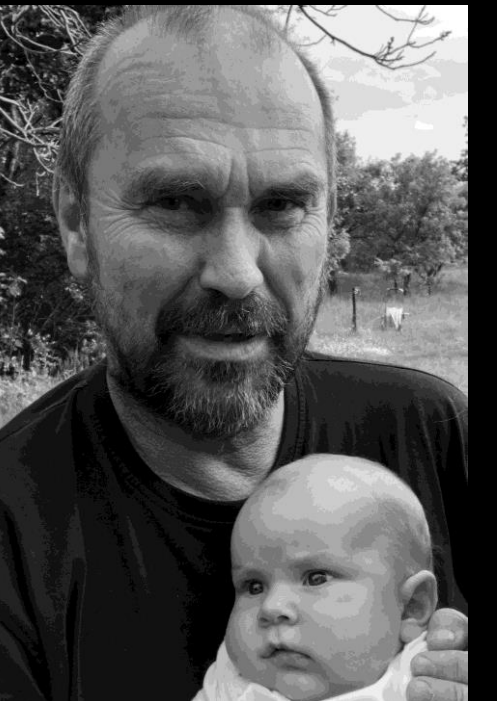
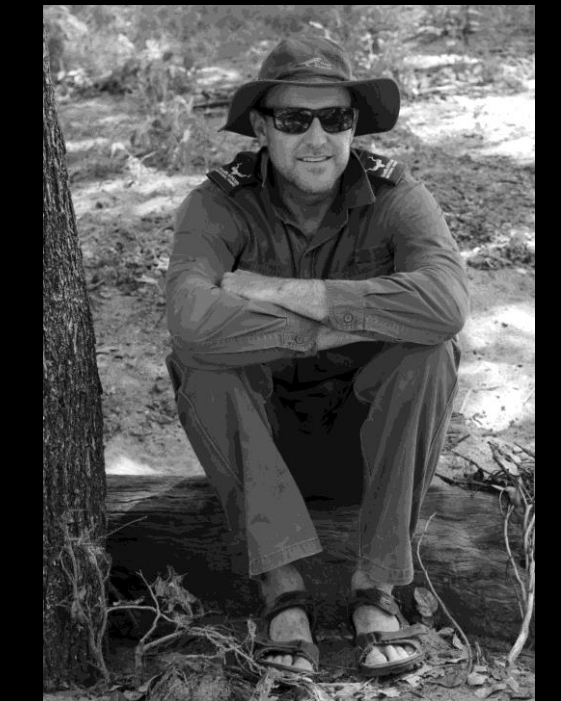
Klára Pyšková^{1,2}, Llewellyn Foxcroft^{3,4} & Petr Pyšek^{2,1}

¹Department of Ecology, Faculty of Science, Charles University, Prague, Czech Republic

²Department of Invasion Ecology, Institute of Botany, Czech Academy of Sciences, Průhonice, Czech Republic

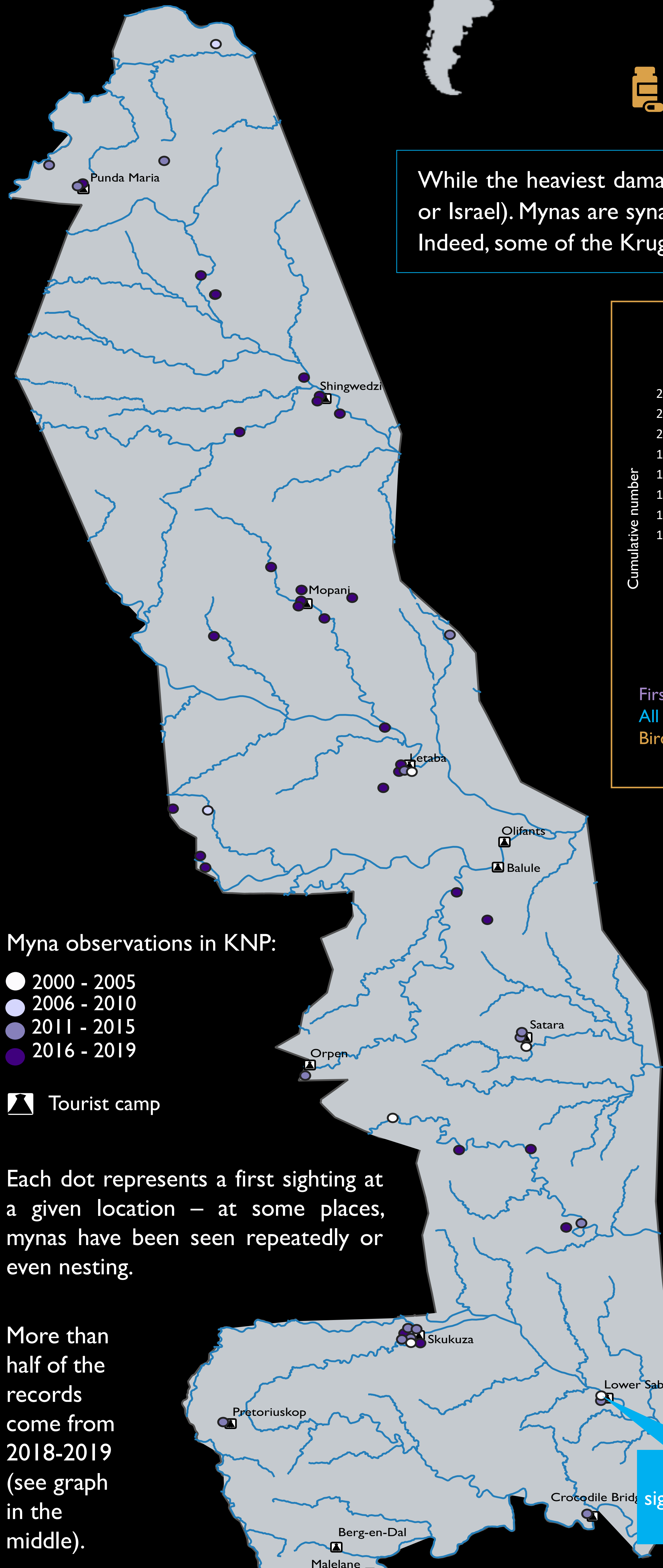
³Scientific Services, South African National Parks, Skukuza, South Africa

⁴Department of Botany and Zoology, Centre for Invasion Biology, Stellenbosch University, South Africa

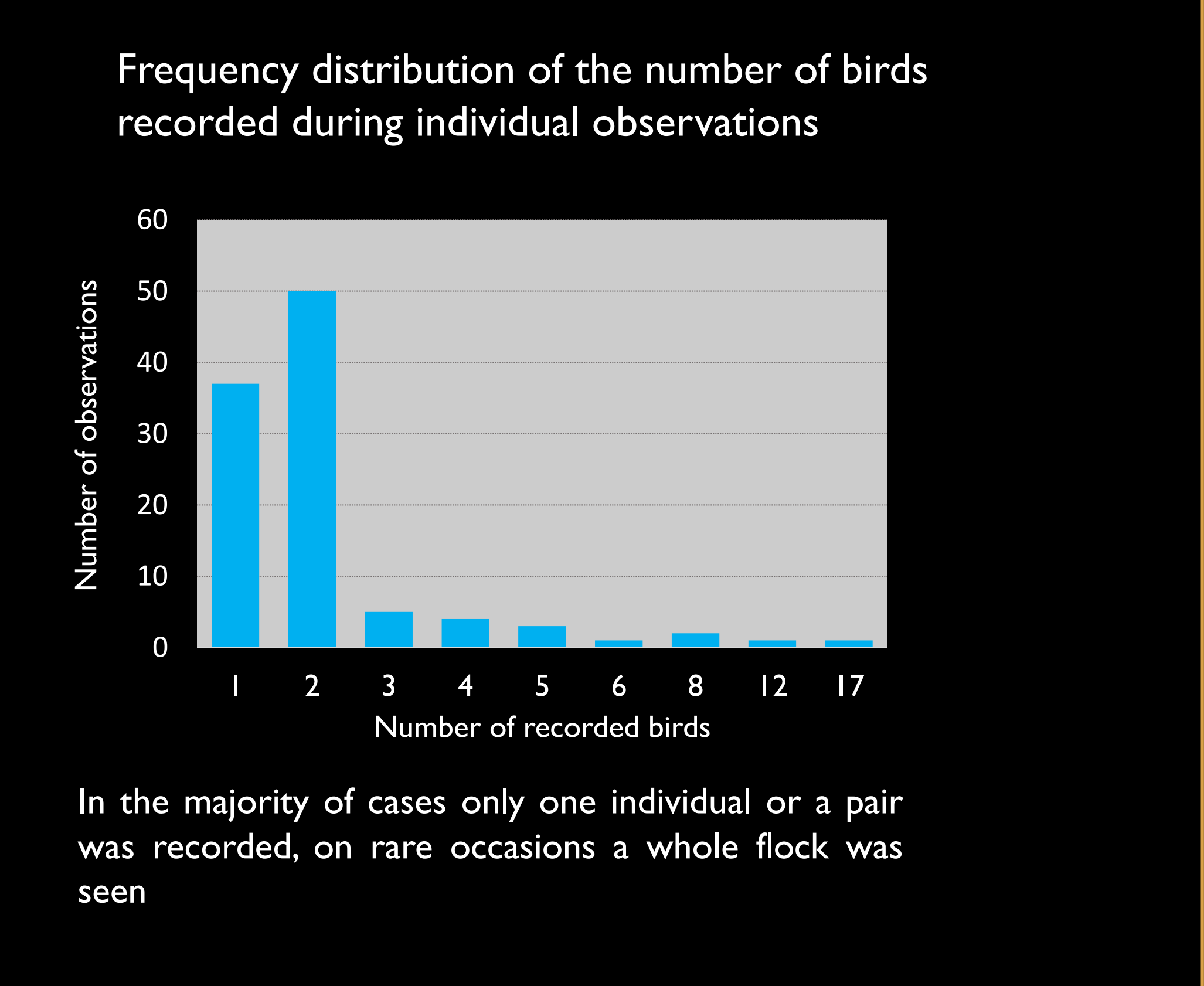
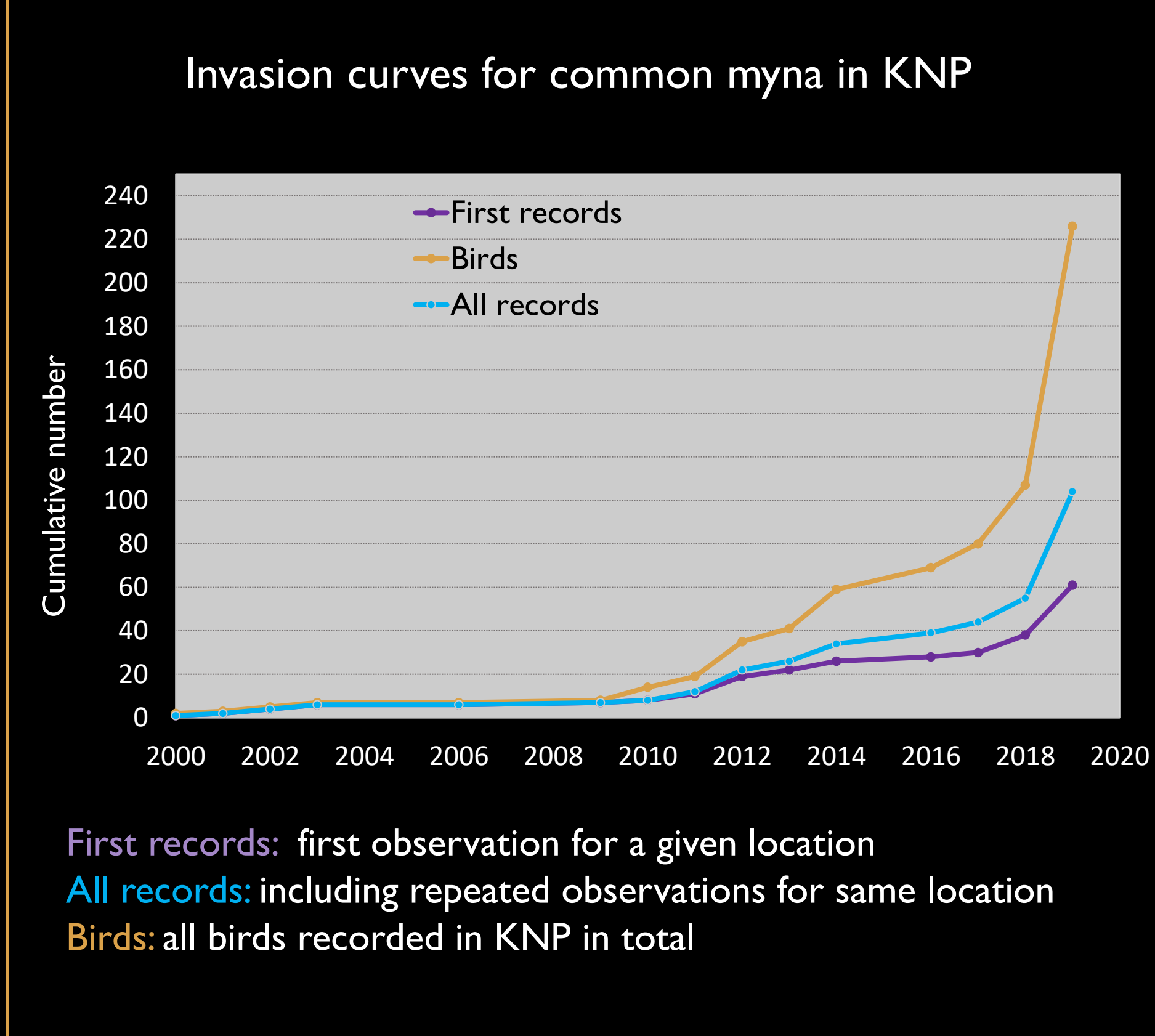


The common myna is native to southern Asia and was introduced to South Africa in 1902 to Durban (Peacock et al. 2007). The IUCN ISSG considers common myna one of the worst 100 invasive species.

Native range
Introductions
These little icons show examples of impact worldwide.



While the heaviest damage has been recorded on invaded islands, there is growing evidence for impacts on mainland (e.g. Australia or Israel). Mynas are synanthropic and urban dwelling species, yet there is evidence that they do sometimes wander into natural areas. Indeed, some of the Kruger records are from places dozens of kilometers from nearest camps or towns (see map on the left).



Myna observations in KNP:
 ● 2000 - 2005
 ● 2006 - 2010
 ● 2011 - 2015
 ● 2016 - 2019
 ▲ Tourist camp

Each dot represents a first sighting at a given location – at some places, mynas have been seen repeatedly or even nesting.

More than half of the records come from 2018-2019 (see graph in the middle).

Kruger represents an ideal environment for common mynas and through their aggressive behaviour and fairly large body size they can compete with native bird populations; they also become a nuisance to tourists. With the rapidly increasing population in the past couple of years, there is a strong need to take action before the invasion fully develops.

Once mynas become established, it is virtually impossible to eradicate them; they are capable of learning from each other, learn to avoid bait or recognise armed shooters and their whereabouts. They are successful because they are...

