

Provided for non-commercial research and education use.
Not for reproduction, distribution or commercial use.



This article appeared in a journal published by Elsevier. The attached copy is furnished to the author for internal non-commercial research and education use, including for instruction at the authors institution and sharing with colleagues.

Other uses, including reproduction and distribution, or selling or licensing copies, or posting to personal, institutional or third party websites are prohibited.

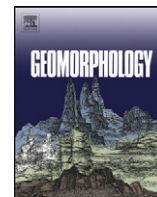
In most cases authors are permitted to post their version of the article (e.g. in Word or Tex form) to their personal website or institutional repository. Authors requiring further information regarding Elsevier's archiving and manuscript policies are encouraged to visit:

<http://www.elsevier.com/authorsrights>



Contents lists available at ScienceDirect

Geomorphology

journal homepage: www.elsevier.com/locate/geomorph

^{10}Be exposure age chronology of the last glaciation in the Krkonoše Mountains, Central Europe

Zbyněk Engel^{a,*}, Régis Braucher^b, Andrzej Traczyk^c, Léanni Laetitia^b, AsterTeam^{b,1}

^a Department of Physical Geography and Geoecology, Faculty of Science, Charles University in Prague, Albertov 6, 12843 Praha, Czech Republic

^b Centre Européen de Recherche et d'Enseignement en Géosciences de l'Environnement, Aix-Marseille Université, CNRS-IRD UM 34, 13545 Aix-en-Provence cedex 4, France

^c Department of Geomorphology, Faculty of Earth Science and Environment Management, University of Wrocław, pl. Uniwersytecki 1, 50-137 Wrocław, Poland

ARTICLE INFO

Article history:

Received 22 April 2013

Received in revised form 28 September 2013

Accepted 1 October 2013

Available online 10 October 2013

Keywords:

Quaternary

Glaciation

Chronology

Exposure-age dating

ABSTRACT

A new chronology of the last glaciation is established for the Krkonoše (Giant) Mountains, Central Europe, based on in-situ produced ^{10}Be in moraine boulders. Exposure ages and Schmidt Hammer rebound values obtained for terminal moraines on the northern and southern flank of the mountains suggest that the oldest preserved moraines represent early phases of the Last Glacial Maximum (LGM). Large moraines at the outlet of the Snowy Cirques (Śnieżne Kotły) and in the middle part of the Úpa (Obří důl) trough were deposited around 21 ka while a series of smaller moraines above the LGM deposits represent readvances that occurred no later than 18.1 ± 0.6 ka, 15.7 ± 0.5 ka, 13.5 ± 0.5 ka and 12.9 ± 0.7 ka. An exposure age of 13.8 ± 0.4 ka obtained for protalus ramparts at the foot of the Úpská jáma Cirque headwall indicates that glaciers advanced only in north- to east-facing cirques during the Lateglacial. The last glacier fluctuation was synchronous with the Younger Dryas cold event. The timing of local glacier advances during the last glacial episode correlates with the late Weichselian glacier phases in the Alps and in the Bavarian/Bohemian Forest.

© 2013 Elsevier B.V. All rights reserved.

1. Introduction

The Krkonoše (Giant) Mountains belong to Central European Variscan ranges which hosted local mountain glaciations during the Quaternary. Local glaciations of these ranges may provide important palaeoclimatic information for large regions of Central Europe, as mountain glaciers are sensitive indicators of climatic oscillations (e.g. Allen et al., 2008; Heyman et al., 2013). In this respect, the Krkonoše Mountains together with the Vosges and Bavarian/Bohemian Forest (Bayerischer Wald/Šumava Mountains) are important areas with a well-preserved record of glaciation (Engel et al., 2011). However, due to scarce chronological data and relatively limited extent of glacial deposits, glacial chronologies are poorly constrained (Andreoli et al., 2006; Nývlt et al., 2011). Palaeoclimate and landscape changes during the Late Quaternary are relatively well documented in lowland areas around the Krkonoše Mountains where a variety of sediment records exists (Bohncke et al., 2008; Engels et al., 2008; Frechen et al., 1999; Krzyszkowski, 1990; Krzyszkowski and Kuszell, 2007; Kuneš et al., 2007; Mol, 1997; Ralska-Jasiewiczowa et al., 2004; Rybníčková and Rybníček, 1996; Tyráček and Havlíček, 2009). However, less is known about the climate conditions in mountain areas, which generally retain poorer palaeoclimate records. In the Krkonoše Mountains, radiocarbon-

dated lake sediments (Wicik, 1986) and peat sequences (Hüttemann and Bortenschlager, 1987; Jankovská, 2004; Skrzypek and Jędrysek, 2005; Speranza et al., 2000; Svobodová, 2004) document landscape evolution and climate fluctuations during the Holocene but significantly less is known about the Lateglacial period (Engel et al., 2010; Jankovská, 2007). Late Weichselian glaciation records therefore present a potentially promising proxy for climatic and environmental changes, largely missing from other sedimentary records.

Since the late 19th century, there have been attempts to identify and date local glacial episodes. A first chronology of local glaciations was proposed by Partsch (1882), who assigned moraines to the last and penultimate glacial periods according to their morphological characteristics and relative position in the landscape. An alternative hypothesis of a single glaciation was proposed two decades later based on geomorphologic criteria (Werth, 1901). However, due to the absence of absolute dating, the timing of glacier advances remained unknown until the end of the 20th century. Initial attempts to constrain the chronology of glaciations were limited to radiocarbon and thermoluminescence (TL) dating of sediments in cirques and moraine depressions. Radiocarbon data indicated minimum ages for the final withdrawal of local glaciers in the Mały Staw Lake (9450 ± 210 ^{14}C yr BP, Wicik, 1986) and in the upper Labe Valley (9572 ± 54 ^{14}C yr BP, Engel et al., 2004). TL dating of sediments in moraine depressions below the Snowy Cirques (Śnieżne Kotły) has provided the first chronological indication of prelate Weichselian glaciation. TL ages of 87–93 ka from two cores suggest that the maximum glacial advance occurred during the early Weichselian or earlier glaciation (Chmal and Traczyk, 1999). A possible

* Corresponding author. Tel.: +420 22 195 1373; fax: +420 22 195 1367.

E-mail address: engel@natur.cuni.cz (Z. Engel).

¹ AsterTeam: Maurice Arnold, Georges Aumaître, Didier Bourlès, and Karim Keddadouche.

pre-late Weichselian glacial episode was supported by tentative correlation of till deposits in the Úpa Valley (Carr et al., 2002) and by relative-age and exposure dating of moraines in the pre-existing Labe trough (Braucher et al., 2006; Carr et al., 2007).

The most recent data constrain the timing of the late Weichselian glaciation in the Krkonoše Mountains. The sedimentary record from the Labe Valley indicates that the cirque was ice-free around 27.7 ± 1.5 ka, suggesting the limited extent of the last glaciation within MIS 2 (Engel et al., 2010). ^{10}Be exposure ages from moraine boulders in the Łomnica and Łomniczka valleys imply the deposition of the oldest preserved moraines in the Last Glacial Maximum (LGM) and subsequent readvances between 17.0 ± 0.5 ka and 13.6 ± 0.9 ka (Engel et al., 2011). The recession of the Labe and Łomnica glaciers terminated no later than 10.8 ± 1.0 cal. ka BP and 11.5 ± 0.3 cal. ka BP, respectively (Chmal and Traczyk, 1998; Engel et al., 2010).

In this paper, we present ^{10}Be exposure ages for the most complete sequences of moraines in the Snowy Cirques area and in the upper Úpa Valley, central Krkonoše Mountains. We interpret the new ages together with previously published chronological data on local glaciations and we suggest a chronology of the late Weichselian glaciation of the region. The proposed chronology is included into the frame of the Late Quaternary landscape evolution in the Krkonoše Mountains and the timing of local glaciations is compared with existing chronologies in Central Europe.

2. Study area

The Krkonoše Mountains are located in a transitional belt between areas dominated by oceanic climate and continental type regimes. The annual precipitation is moderate and increases with altitude from about 800 mm at Kowary weather station (460 m a.s.l.) up to >1500 mm per year in the highest areas of the western part of the Krkonoše Mountains (Głowicki, 2005; Halásová et al., 2007). The mean annual temperature (1961–1990) ranges from 7 °C in foreland areas to 0.4 °C at Sněžka weather station (1602 m a.s.l.), located in the eastern part of the study

area (Gramsz et al., 2010; Halásová et al., 2007). Winds are mostly westerly and are responsible for the transport of snow from the summit plateaus to leeward slopes (Jeník, 1961).

The Krkonoše Mountains comprise WNW–ESE oriented parallel ridges which delimit two high-elevated plateaus (1400–1450 m a.s.l.) in the central part of the mountains (Fig. 1). The main Silesian Ridge (1400–1600 m a.s.l.) is ~30 km long and falls northward to the intramontane depression of the Jelenia Góra Basin (350–500 m a.s.l.). The parallel Bohemian Ridge is lower (1300–1550 m a.s.l.) and verges into rounded ridges of N–S orientation that are separated by deep river valleys. The Silesian Ridge and plateau areas are built of Carboniferous granite (~318 Ma; Awdankiewicz et al., 2010) whereas the southern part of the mountains consists of Cambrium to Ordovician metamorphic rocks (Žáčková et al., 2011). The high-elevated plateaus in the Labe and Úpa rivers source areas formed during the Late Cretaceous and the early Palaeogene after the end of a long period of erosion ~75 Ma (Danišík et al., 2010; Migoń, 1997).

Glacial geomorphology dominates the relief of the central part of the Krkonoše Mountains where cirques and troughs are deeply incised into the summit plateaus. The best-developed cirques of Sněžné Kotly and Łomnica Valley border the northern part of the summit plateaus which have acted as deflation surfaces supplying snow to the glaciers around (Parsch, 1882). Glacial lakes and post-glacial peat bogs occupy the floors of these cirques. The less-developed cirques are distributed along the eastern and southern edges of the plateaus from where glaciers extended into the deeply incised valleys of the Labe and Úpa rivers transforming them into troughs (Sekyra, 1964). In addition to 13 well-defined cirques in the Krkonoše Mountains (Křížek et al., 2012), there are about 30 valley heads where small glaciers could have originated during the Quaternary (Šebesta and Tremil, 1976). Two areas with the best-preserved moraine sequences in the Krkonoše Mountains were selected as the study area (Fig. 1). The Snowy Cirques are located in the western part of the mountains and the upper Úpa Valley represents the eastern part of the range.

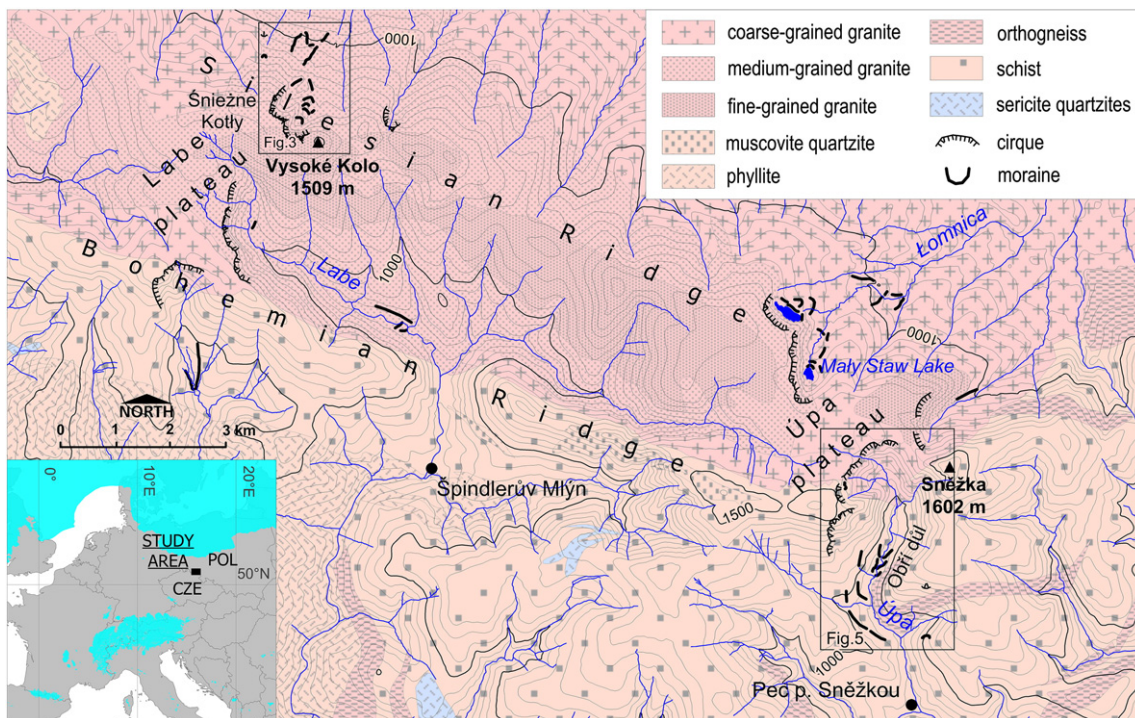


Fig. 1. Location of study areas within the Krkonoše Mountains and central Europe (inset).

Geology simplified from GeoCR 50 dataset (Czech Geological Survey, 2004) and the Last Glacial Maximum extent of ice sheets (blue areas in the inset) after Ehlers et al. (2011).

2.1. Snowy Cirques area

The Wielki Śnieżny Kocioł (WSK) and the Mały Śnieżny Kocioł (MSK) cirques are incised into the northeastern slope of the main ridge of the mountains (Fig. 2A). The cirques have less than 200 m-high rock headwalls (Fig. 2B), which are composed of fine- to medium-grained biotite granite (Traczyk, 2009). The sheer rock headwalls are dissected by frequent ravines from which large talus cones descend to the cirque floor. The flat floor of the WSK cirque (1240–1300 m a.s.l.) is covered by moraine ridges and interleaved depressions, occupied by the Snowy Lakes (Śnieżne Stawki). A relic small rock glacier (Traczyk, 2009) occurs on more inclined and narrower floor of the MSK cirque (1200–1280 m a.s.l.). A major part of the cirques is located above the local timberline (1180–1280 m a.s.l.) where dwarf pine (*Pinus mugo*) dominates (Jeník and Lokvenc, 1962). By contrast, a spruce forest (*Picea excelsa*) covers the forefield of the cirques, including the oldest moraines.

The outermost and thus probably oldest moraines SK-I and SK-II are situated in the forefield of the Snowy Cirques at 930–1120 m a.s.l. (Fig. 3). The moraine complex consists of two terminal moraines with the lowest points at 930 and 960 m a.s.l. The location of the moraines implies the deposition by two individual glacier snouts descending from the MSK and WSK cirques. These terminal moraines are less than 25 m high, and are characterised by steep fronts and flat upper surfaces without characteristic sharp crests. Their morphology shows slightly undulating surfaces with numerous depressions implying vast post-depositional degradation and a potential rotation or shift of moraine boulders. The remnants of lateral moraines are well preserved along the western margin of deglaciated terrain and they can be traced for about 500 m and 750 m up-valley to the mouth of the MSK and WSK cirques, respectively.

The largest moraines SK-III occur in front of the MSK cirque at 1150–1220 m a.s.l. (Fig. 2C). Well-preserved ridges are less than 50 m high and terminate about 500 m laterally from the mouth of the cirque. The left lateral ridge can be traced up-valley for a distance of 250 m to the northern margin of the MSK cirque whereas the right lateral moraine stretches for about 250 m towards the outer rim of the WSK cirque. At the lowest point, the frontal moraine is dissected by the former outflow from the melting glacier. Recent fluvial reworking of the incision is negligible because superficial outflow from the cirque is low. Apart from the trench, only minor signs of post-depositional periglacial or fluvial reworking can be seen on the moraine.

The uppermost moraine SK-VII (1250–1310 m a.s.l.) forms a well-preserved ridge close to the foot of the WSK cirque headwall (Fig. 2B). The moraine is less than 35 m high and only its southeastern part is covered by debris-flow deposits (Migoń et al., 2010). A sequence of three moraine systems can be distinguished in front of the moraine SK-VII (Fig. 2D). The most prominent ridge SK-IV closes the lower part of the cirque floor at 1230–1270 m a.s.l. The moraine is ~30 m high and contains abundant coarse and blocky debris. Between SK-IV and SK-VII moraines there are fragments of two moraine relics (SK-V, SK-VI) which are separated by parallel depressions filled by shallow lakes. Boulders on the surface of the moraine relics are sub-angular to sub-rounded and up to several metres in diameter.

2.2. Úpa Valley

The upper Úpa Valley is situated on the lee-side of the high-elevation summit plateau of the Bílá louka Meadow, stretching southward from Sněžka Mountain (1602 m a.s.l.). A sharp upper limit of the Úpská jáma Cirque (Fig. 4A) descends from 1500 m a.s.l. in the western part of the cirque to 1380 m a.s.l. in its northern section. The best-

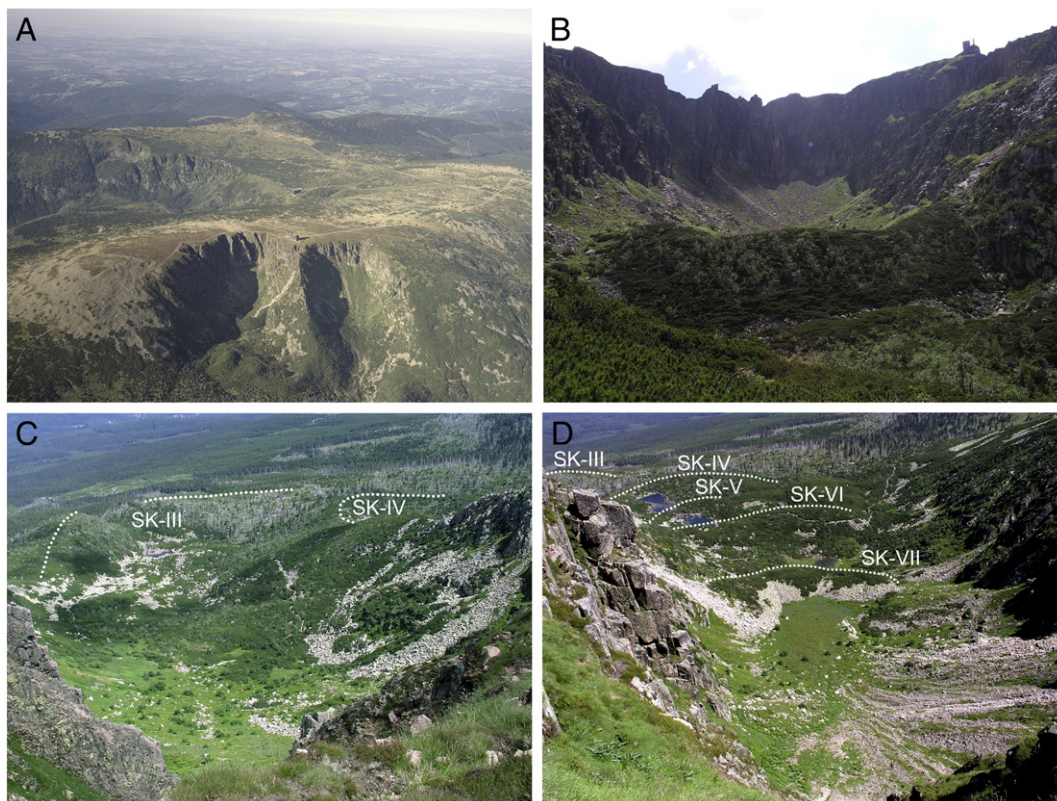


Fig. 2. Glacial landforms in the Snowy Cirques area. An overall view from the north (A) illustrates dissection of the high-elevated plateau in the western part of the Krkonoše Mountains dissected by the Snowy Cirques (in front) and the cirque of the upper Labe Valley (left). The Wielki Śnieżny Kocioł Cirque (B) with steep headwall and flat floor is the best developed cirque in the mountains. Note the uppermost moraine at the foot of the cirque headwall. Well-preserved moraine ridges close the mouth of the cirque (C) and cover the cirque floor (D). Photographs: MGGP Aero (A) and Z. Engel.

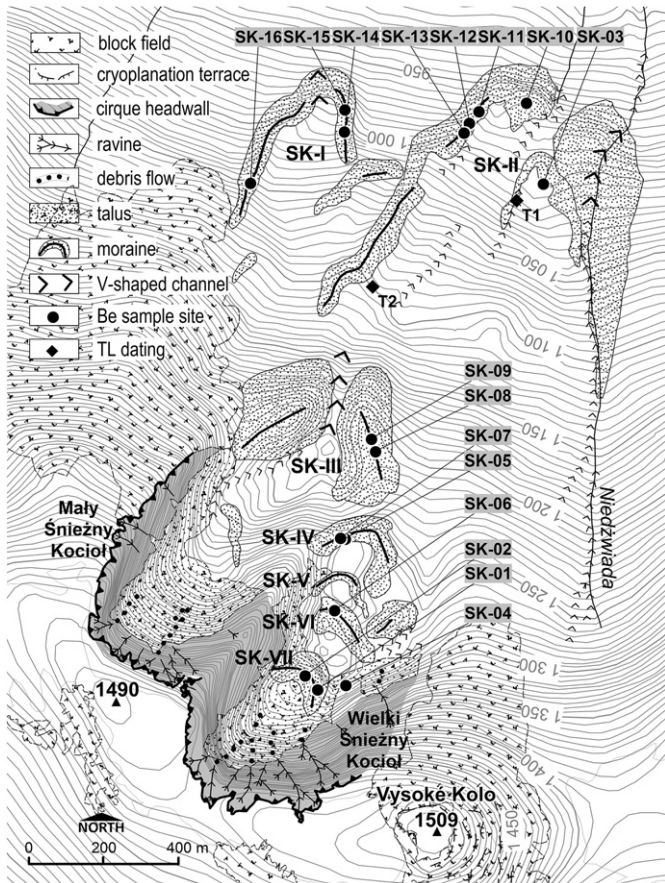


Fig. 3. Simplified geomorphologic map of the Snowy Cirque area with moraine locations and sampling sites.

developed cirque headwalls in the western part of the cirque are less than 100 m high but have slopes of greater than 50°. The upper part of the cirque headwall descends to a narrow step at 1300 m a.s.l. which is partly covered by slope deposits and protalus ramparts (Fig. 4B). The cirque floor is located at 1050–1020 m a.s.l. and its transition to a trough has the form of a 60 m high step (Fig. 4C). The cirque is carved in medium-grained porphyritic granite whereas the trough is made up by muscovite mica schist with intercalations of quartzite, chert and gneiss. The Úpa (Obří důl) trough is 3 km long and terminates below the hanging mouth of the Modrý důl Valley. A small glacier probably originated in this tributary valley and as well as in deeply incised hanging cirques in the eastern slope of Studniční hora Mountain (1554 m a.s.l.).

The upper Úpa Valley preserves a sequence of five moraines. Relics of the terminal moraine G-I (825–1020 m a.s.l.) are situated in the lower part of the Úpa trough (Fig. 5) with the lowest point at the confluence of the Růžový potok and Úpa rivers (825 m a.s.l.) The best-preserved moraine ridge rises up the western valley slope towards the mouth of the Modrý důl Valley to 100 m above the floor of the trough. A short section of glacial accumulations on the eastern valley slope is incised and partly covered by alluvial deposits. A sequence of four moraines can be distinguished in the central part of the Úpa trough. The largest moraine G-II occurs above the confluence of the Modrý potok and Úpa rivers (Fig. 4D). The moraine rises from the foot of the western trough slope, extending from 895 to 980 m a.s.l. The last remnants of the lateral ridge can be distinguished below the Velká Studniční jáma Cirque, around 140 m above the trough floor. A lower part of the moraine has been dissected and removed by the Úpa River as have some moraines located higher in the trough. Small remnants of recessional moraines G-III occur above the mouth of the Jestřábí ručej River at 910 m a.s.l. The remnants are ~7 m high and contain very few large boulders on their surface. A sequence of two morphologically pronounced moraine systems can be distinguished behind the moraine G-III. The moraines G-IV and

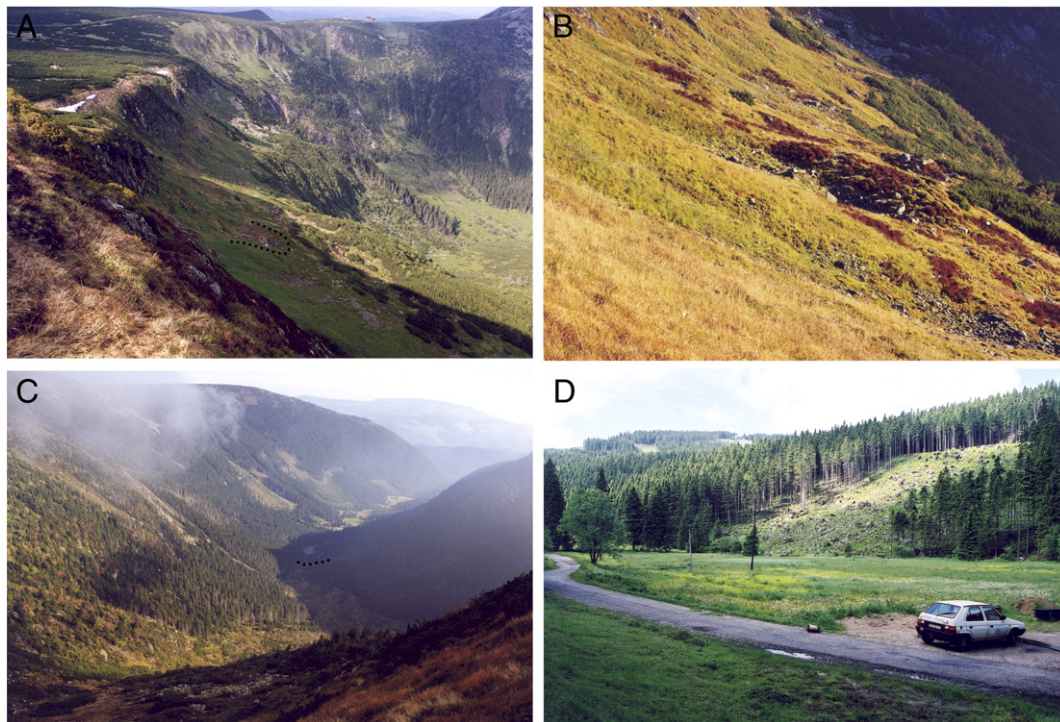


Fig. 4. The Úpská jáma Cirque headwall (A) is significantly lower and less-pronounced compared to the headwalls of the Snowy Cirques (see Fig. 2B). A dotted line in the photograph A indicates one of two protalus ramparts sampled for ¹⁰Be exposure dating. Photograph B documents distinct morphology of this protalus. Photograph C shows the Úpa trough where moraines are deposited. A dotted line indicates the location of the step that delimits the cirque floor. The lateral moraine (D, right upper corner) above the confluence of the Úpa and Modrý potok rivers.

Photographs: Z. Engel.

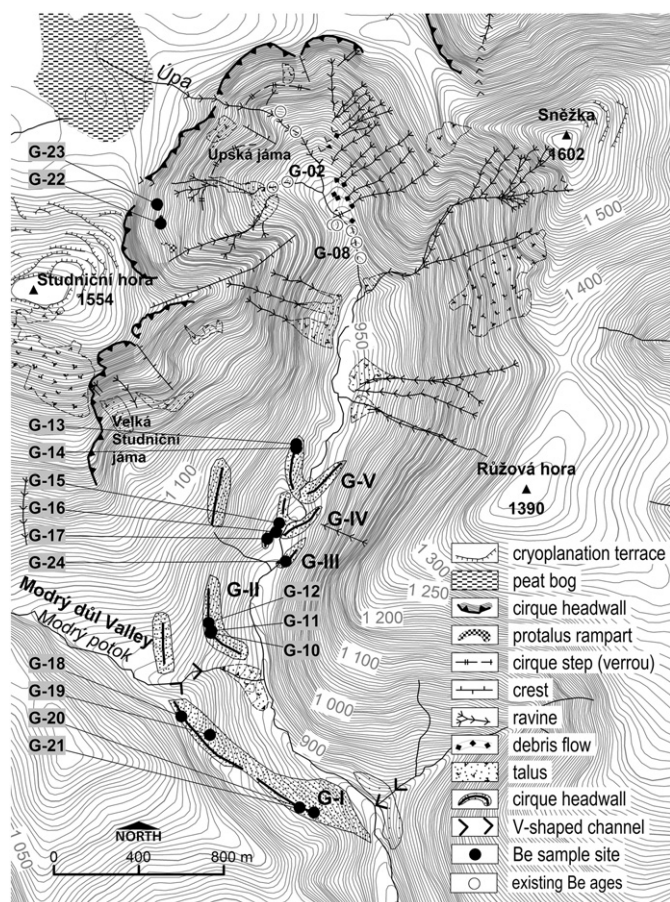


Fig. 5. Geomorphologic map of the upper Úpa Valley. The sites G-01 to G-09 indicate the locations of surfaces dated by Braucher et al. (2006) whereas G-10 to G-22 represent sites sampled as a part of this study.

G-V with the lowest points at 915 and 930 m a.s.l. rise up the western and eastern valley slopes. These recessional moraines are ~15 m high, and are characterised by rounded ridges with a limited amount of boulders suitable for exposure dating.

3. Methods

3.1. Site selection and sampling

^{10}Be surface exposure dating is an important tool for the reconstruction of mountain glaciation chronologies and studies that sample morainic boulders have given consistent results (e.g. Ivy-Ochs et al., 2007; Zreda and Phillips, 1995). The sampling of glacially eroded bedrock outcrops can also provide reliable data (Delmas et al., 2008; Gosse et al., 1995; Kelly et al., 2002); however complication can potentially arise from inherited nuclide concentrations (Ivy-Ochs and Kober, 2008). Moreover, bedrock steps and roches moutonnées are generally rare and irregularly distributed in mountain valleys. In this study sampling therefore focuses on morainic boulders, which best represent the timing of glacier advances (Gosse, 2005). Surface exposure dating reflects a complete exposure history of these surfaces and ages obtained may record pre-exposure of boulders, post-glacial degradation of surface or changes of boulder position (Gosse and Phillips, 2001; Hallet and Putkonen, 1994; Ivy-Ochs et al., 2007; Zimmerman et al., 1994). During the sampling, the selection of boulders in their original position is therefore an essential step for obtaining accurate ages. In order to increase the probability that the dated boulders have remained in a stable position, large upright boulders on the surface of moraines have been

identified; samples have been collected preferentially from the upper surfaces of upright boulders located on crests of moraine ridges.

In addition, a bedrock surface (SK-04) at the foot of the WSK cirque headwall and protalus ramparts (G-22 and G-23) in the Úpská jáma Cirque were sampled to constrain the timing of glacier recession. All sampled surfaces were composed of medium-grained biotite monzogranite. In order to increase the accuracy of glacial chronology, at least two boulders were sampled for each moraine. While dating of multiple samples does not guarantee that the obtained timing is correct, it increases the probability that the oldest age will coincide with the landform age (Zreda and Phillips, 1995). Following the recommendations presented by Putkonen and Swanson (2003), three to five samples were collected from two moraines with presumably higher ages (SK-I, SK-II, G-I and G-II). Overall, 16 sites (SK-1 to SK-16) were sampled in the Snowy Cirques area and 15 sites (G-10 to G-24) in the Úpa Valley (Figs. 3, 5). Site characteristics and description are given in Table 1.

A Schmidt hammer (SH) was utilised to derive rebound (R) values for moraines that allow assessment of differences in the degree of weathering between the sampled moraines and limited correlation of moraines in the Krkonoše Mts. (Engel et al., 2011). The mean R-value of each moraine was calculated based on 150 SH assays undertaken on embedded granite boulders. 25 hammer impacts taken on horizontal surface of six boulders were processed following Moon's (1984) guidelines. The mean R-values from six boulders were averaged and the resulting value was taken as representative for each moraine. Analysis of variance (ANOVA) was used to determine whether any differences exist in mean R-value among groups of moraines. The significance of a relationship was tested by F test with p-level 0.05.

3.2. Sample preparation and data treatment

The granite samples were crushed, sieved and cleaned with a mixture of HCl and H_2SiF_6 . The extraction method for ^{10}Be ($T_{1/2} = 1.387 \pm 0.012 \text{ Ma}$) (Chmeleff et al., 2010; Korschinek et al., 2010) involves isolation and purification of quartz and elimination of atmospheric ^{10}Be . A weighed amount (~0.1 g) of a 3025 ppm solution of ^9Be was added to the decontaminated quartz. Beryllium was subsequently separated from the solution by successive anionic and cationic resin extraction and precipitation. The final precipitates were dried and heated at 800 °C to obtain BeO and finally mixed with niobium powder prior to measurements, which were performed at the French Accelerator Mass Spectrometry (AMS) National Facility. Beryllium data were calibrated directly against the National Institute of Standards and Technology beryllium standard reference material 4325 by using an assigned value of $(2.79 \pm 0.03) \cdot 10^{-11}$. Age uncertainties include AMS internal variability (<0.5%), an external AMS uncertainty of 0.5% (Arnold et al., 2010), blank correction and 1 sigma uncertainties. Long-term measurements of chemically processed blanks yield ratios in the order of $(3.0 \pm 1.5) \cdot 10^{-15}$ for ^{10}Be . A sea-level, high-latitude spallation production of $4.03 \pm 0.18 \text{ at} \cdot \text{g}^{-1} \cdot \text{yr}^{-1}$ was used and scaled for latitude (Stone, 2000) and elevation. This production rate is a weighted mean of recently calibrated production rates in Northern Hemisphere: Northeastern North America (Balco et al., 2009), Northern Norway (Fenton et al., 2011), Southern Norway (Goehring et al., 2012) and Greenland (Briner et al., 2012). All individual production rates have been corrected related to a ^{10}Be half-life of 1.387 Ma.

Surface production rates were also corrected for local slope and topographic shielding due to surrounding terrain following Dunne et al. (1999). The shielding from snow was estimated according to Gosse and Phillips (2001) and Reuther (2007) using average snow density of $0.3 \text{ g} \cdot \text{cm}^{-3}$, the mean thickness and duration of snow cover in the study area. These values were estimated from data collected during the years 1961–1990 at nine weather stations in the Krkonoše Mountains (445–1410 m a.s.l.) and from detailed measurements of snow cover in valley heads (Głowicki, 1977; Kwiatkowski and Lucerski, 1979).

Table 1
Sampling sites and ^{10}Be surface exposure ages from the Snowy Cirques and Úpa Valley.

Sample	Altitude (m)	Boulder height (m)	Surface dip/aspect (°)	Sample thickness (cm)	Topographic shielding factor	Snow cover depth/duration (cm/month)	Total shielding factor	Production rate ($\text{at}^{-1} \text{g}^{-1} \text{yr}^{-1}$)	^{10}Be concentration ($\text{at}^{-1} \text{g}^{-1}$)	^{10}Be uncertainty (yr)	^{10}Be age (yr)	Analytical uncertainty (\pm yr)	Total uncertainty (\pm yr)
SK-01	1283	1.4	Horizontal	3	0.98584	151/6	0.85623	10.807	137,094	9209	12,652	850	1139
SK-02	1273	1.4	Horizontal	3	0.98700	155/6	0.85449	10.700	140,016	5851	13,052	545	954
SK-03	1000	3.0	Horizontal	3	0.99669	128/5	0.90231	9.059	177,097	8405	19,511	926	1493
SK-04	1254	– ^a	17/350	3	0.97989	160/6	0.84494	10.421	135,268	5177	12,945	495	921
SK-05	1240	3.0	Horizontal	3	0.99698	163/5	0.85763	10.460	132,817	21,003	12,662	2002	2142
SK-06	1253	6.0	Horizontal	3	0.99552	160/6	0.85842	10.579	143,556	4861	13,535	458	933
SK-07	1245	2.0	2/355	3	0.99887	162/6	0.85994	10.531	191,279	6658	18,138	631	1258
SK-08	1208	1.0	10/15	1	0.99932	165/6	0.85828	10.268	219,197	7064	21,193	687	1455
SK-09	1207	1.5	Horizontal	1	0.99948	165/6	0.85841	10.261	216,294	6294	20,927	613	1406
SK-10	986	1.2	Horizontal	3	0.99971	127/5	0.90294	8.962	173,162	6179	19,283	688	1346
SK-11	982	1.8	Horizontal	3	0.99969	127/6	0.87171	8.623	136,806	4969	15,820	575	1110
SK-12	993	1.4	Horizontal	2	0.99853	128/6	0.86997	8.682	132,487	7647	15,213	878	1267
SK-13	998	1.5	Horizontal	2	0.99964	128/6	0.87094	8.728	130,880	7012	14,950	801	1203
SK-14	1007	1.6	Horizontal	2	0.99941	128/6	0.87074	8.792	145,909	6221	16,552	706	1218
SK-15	1001	1.4	10/60	2	0.99964	128/6	0.87094	8.754	169,423	5964	19,316	680	1344
SK-16	1055	1.5	Horizontal	2	0.99921	130/6	0.86914	9.128	189,970	9354	20,782	1023	1613
G-10	947	3.2	Horizontal	3	0.99894	126/5	0.89030	8.554	126,852	8314	14,780	969	1313
G-11	951	1.8	Horizontal	3	0.99870	126/5	0.89030	8.583	151,575	17,018	17,615	1978	2242
G-12	961	2.6	10/355	3	0.99780	126/5	0.88941	8.645	123,628	8073	14,252	931	1264
G-13	971	2.0	17/90	2	0.99582	127/5	0.88549	8.677	130,270	4251	14,965	488	1022
G-14	966	1.2	Horizontal	4	0.99582	127/5	0.88549	8.643	135,878	4211	15,674	486	1058
G-15	940	1.8	Horizontal	4	0.99348	126/5	0.88400	8.442	123,407	4498	14,569	531	1023
G-16	932	1.5	Horizontal	3	0.99416	125/5	0.88521	8.400	153,404	5505	18,218	654	1274
G-17	927	2.5	7/95	3	0.99487	126/5	0.88524	8.506	161,780	5428	18,978	738	1512
G-18	987	1.0	Horizontal	4	0.99748	127/5	0.88696	8.812	144,672	4448	16,374	503	1104
G-19	974	3.5	Horizontal	3	0.99905	127/5	0.88835	8.725	165,054	5480	18,877	627	1294
G-20	914	1.6	Horizontal	3	0.99915	125/5	0.88965	8.317	123,199	9521	14,762	1141	1444
G-21	906	1.8	15/110	3	0.99917	124/5	0.89026	8.267	138,368	4779	16,689	576	1155
G-22	1353	1.5	Horizontal	3	0.97873	109/6	0.86634	11.552	162,649	5222	14,049	451	956
G-23	1365	0.9	Horizontal	2	0.99244	102/6	0.88369	11.898	162,025	4946	13,588	415	915
G-24	925	2.7	Horizontal	3	0.99246	122/5	0.88549	7.783	129,504	4203	16,585	571	1201

^a Bedrock outcrop at the foot of the WSK cirque headwall.

Cosmic Rays Exposure ages were calculated using the equation:

$$C_{(x,\varepsilon,t)} = \frac{P_{\text{spall}}}{\Lambda_n + \lambda} \cdot e^{-\frac{x}{\Lambda_n}} \left[1 - \exp\left\{-t\left(\frac{\varepsilon}{\Lambda_n} + \lambda\right)\right\}\right] + \frac{P_\mu}{\Lambda_\mu + \lambda} \cdot e^{-\frac{x}{\Lambda_\mu}} \left[1 - \exp\left\{-t\left(\frac{\varepsilon}{\Lambda_\mu} + \lambda\right)\right\}\right]$$

where $C(x, \varepsilon, t)$ is the nuclide concentration as a function of depth x ($\text{g}\cdot\text{cm}^{-2}$), ε the denudation rate ($\text{g}\cdot\text{cm}^{-2}\cdot\text{a}^{-1}$), λ the radioactive decay constant (a^{-1}), and t the exposure time (a). P_{spall} , and P_μ are the relative production rates due to neutrons and muons, respectively. Λ_n , Λ_μ are the effective apparent attenuation lengths ($\text{g}\cdot\text{cm}^{-2}$), for neutrons and muons, respectively. The muon scheme follows Braucher et al. (2011).

3.3. Surface exposure ages interpretation

The set of exposure ages from single moraines was processed along with general interpretation strategies (Olvy-Ochs et al., 2007; Phillips et al., 1990). It was taken into account, that a mean exposure age of boulders differs from the timing of moraine deposition and age distributions tend to tail to younger age (Phillips et al., 1990; Zreda and Phillips, 1995). Therefore, a distribution of exposure ages obtained from a single moraine in the study area was expected with respect to its modality and age range. When boulder ages cluster and overlap within one-sigma deviation of the oldest age then average age was calculated and taken as representative for moraine. An average was used instead of error-weighted mean that implies misleading robustness of ages (Ivy-Ochs et al., 2007). In most cases, age distributions for a single moraine were not unimodal and the oldest exposure ages obtained were interpreted to represent the timing of deposition. The possible effect of pre-exposure was also considered using exposure ages and SH testing. The inheritance could be indicated by the discrepancy between measured R-values and exposure ages or by apparently higher ages compared with adjacent moraines.

As deposits of some glacial advances are mostly missing at a given location (Gibbons et al., 1984; Zreda and Phillips, 1995), the timing of a moraine sequence may be interpreted as a first approximation of the local glaciation chronology. In order to constrain the timing of glaciations in the Krkonoše Mountains, chronologies from both study areas were interpreted to represent major intervals of deposition. Finally, the proposed glacial chronology was compared with the Central European context.

4. Results

4.1. Chronology of moraines in the Snowy Cirques area

The SH R-values are strongly consistent within the area, decreasing with presumed age of moraines (Fig. 6). The mean R-values measured on the moraine SK-I (25.4 ± 1.4 to 32.4 ± 4.4) and SK-II (27.5 ± 2.6 to 35.5 ± 2.6) are significantly lower ($F(1;10) = 59.478, p < 0.001$) than mean R-values obtained for moraines located higher-up in the cirque area (33.0 ± 5.6 to 44.3 ± 4.6). Among moraine belts in the cirque, there is no significant difference in the mean R-values with the exception of the uppermost moraine SK-VII. The mean R-values obtained for boulders on this moraine (40.8 ± 5.3 to 44.3 ± 4.6) are significantly higher ($F(1;10) = 6.593, p = 0.028$) than values calculated for the moraine SK-VI (36.9 ± 3.0 to 42.0 ± 4.2).

Despite the observed R-values, the variability of exposure ages is high within the same moraine, with exceptions of the moraine SK-VII and SK-III. Samples SK-01 (12.7 ± 0.9 ka) and SK-02 (13.1 ± 0.5 ka) give the mean age of 12.9 ± 0.7 ka for the moraine SK-VII. Samples SK-08 (21.2 ± 0.7 ka) and SK-09 (20.9 ± 0.6 ka) from the moraine

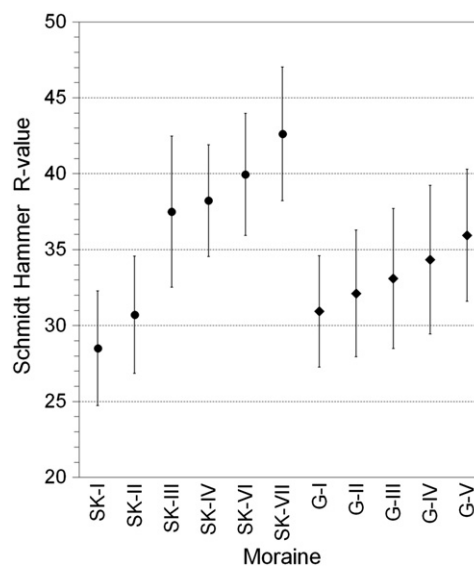


Fig. 6. Mean R-values for moraines in the Snowy Cirque area (circles) and Úpa Valley (diamonds).

SK-III exhibit a good agreement for both R-values and exposure ages but the high R-values should be linked with young exposure ages or vice versa but this is not what is observed (Table 2). The variability in ^{10}Be ages from other moraines exceeds one-sigma deviation of the oldest boulder age and only the oldest ages are taken as representative for these moraines.

The set of exposure ages shows reasonable consistency in chronology of moraines except for the moraine SK-III. The mean (21.1 ± 0.7 ka) and oldest (21.2 ± 0.7 ka) age of this moraine are greater than the oldest age (SK-03: 19.5 ± 0.9 ka) obtained for apparently older moraine SK-II and are roughly the same as the oldest sample SK-16 (20.8 ± 1.0 ka) from the moraine SK-I (Fig. 7). This may be explained either by pre-exposure of sampled boulders on moraine SK-III or by underestimation of ages obtained for the moraines SK-I and SK-II. Possible reasons are considered in Section 5.1.

4.2. Chronology of moraines in the Úpa Valley

The SH data presented in Table 2 indicate that the degree of weathering of moraine boulders increase with presumed age of moraines. The mean R-value increases from 30.9 ± 3.7 for the terminal moraine G-I to 35.9 ± 4.3 for moraines G-V located in the upper part of the trough (Fig. 6). The mean R-values for all moraine belts are well within standard deviations of the whole dataset and there is no significant difference in the degree of weathering among moraines. This may be attributed to relatively narrow time span during which moraines were deposited. The mean R-value of 37.1 ± 3.4 was obtained for protilus ramparts located at the foot of the Úpská jáma Cirque headwall at 1350–1365 m a.s.l.

Exposure ages show reasonable within-site consistency only for protilus ramparts. The exposure age for G-22 (14.0 ± 0.5 ka) is only slightly lower than the sample G-23 (13.6 ± 0.4 ka) and well within standard deviation of the oldest age. Therefore, the mean exposure age of 13.8 ± 0.4 ka is assigned to protilus ramparts. The variability in ^{10}Be age from moraine boulders exceeds one-sigma deviation of the oldest age for all moraines and the oldest boulder ages are taken as representative for these moraines.

Within exposure age uncertainties, the timing of moraine deposition is consistent. However, samples from the terminal moraine G-I show comparable or lower age than samples from apparently younger moraine G-III (Table 2). As the age for the moraine G-III is consistent with the chronology of moraines higher-up in the valley (Fig. 8), the oldest

Table 2
¹⁰Be surface exposure ages from the Snowy Cirques and Úpa Valley.

Sample	¹⁰ Be age (yr)	¹⁰ Be age uncertainty (\pm yr)	Moraine/sampled surface	Minimum altitude (m a.s.l.)	R-value	Oldest age (ka)	Mean age (ka)
SK-14	16,552	706	SK-I ^a	960	28.5 \pm 3.8	20.8 \pm 1.0	18.9 \pm 0.8
SK-15	19,316	680					
SK-16	20,782	1023					
SK-03	19,511	926	SK-II	930	30.7 \pm 3.9	19.5 \pm 0.9	17.0 \pm 0.8
SK-10	19,283	688					
SK-11	15,820	575					
SK-12	15,213	878					
SK-13	14,950	801					
SK-08	21,193	687	SK-III	1150	37.5 \pm 5.0	21.2 \pm 0.7	21.1 \pm 0.7
SK-09	20,927	613					
SK-05	12,662	2002	SK-IV	1230	38.2 \pm 3.7	18.1 \pm 0.6	15.4 \pm 1.8
SK-07	18,138	631					
SK-06	13,535	458	SK-VI	1240	40.0 \pm 4.0	13.5 \pm 0.5	13.5 \pm 0.5
SK-04	12,945	495	Rochee moutonnée	1254	42.8 \pm 2.8	13.0 \pm 0.5	13.0 \pm 0.5
SK-01	12,652	850	SK-VII	1250	42.7 \pm 4.4	13.1 \pm 0.5	12.9 \pm 0.7
SK-02	13,052	545					
G-18	16,374	503	G-I	825	30.9 \pm 3.7	18.9 \pm 0.6	16.7 \pm 0.8
G-19	18,877	627					
G-20	14,762	1141					
G-21	16,689	576					
G-10	14,780	969	G-II	895	32.1 \pm 4.2	17.6 \pm 2.0	15.5 \pm 1.3
G-11	17,615	1978					
G-12	14,252	931					
G-17	18,978	738	G-III	910	33.1 \pm 4.6	19.0 \pm 0.7	17.8 \pm 0.7
G-24	16,585	571					
G-15	14,569	531	G-IV	915	34.3 \pm 4.9	18.2 \pm 0.7	16.4 \pm 0.6
G-16	18,218	654					
G-13	14,965	488	G-V	930	35.9 \pm 4.3	15.7 \pm 0.5	15.3 \pm 0.5
G-14	15,674	486					
G-22	14,049	451	Protalus rampart	1345	37.1 \pm 3.4	14.0 \pm 0.5	13.8 \pm 0.4
G-23	13,588	415					

^a A moraine deposited by the MSK glacier.

age obtained for the moraine G-I seems to be underestimated. An inaccurate age of the sample G-11 (17.6 \pm 2.0 ka) which represents the moraine G-II is consistent with other dated moraines only due to large ¹⁰Be uncertainty.

4.3. Correlative potential of moraines

The potential of dated moraines for correlations is limited by different position and geomorphology of the two study areas. The response of glaciers to climate changes probably differed between these sites, leading to discrepancies in the timing of moraine deposition. Moreover, the less precise timing of moraines below the Snowy Cirques and in the lower part of the Úpa trough decreases the potential of relevant exposure data for correlations. Exposure ages obtained for the oldest moraines in both study areas overlap within ¹⁰Be age uncertainties, allowing for tentative comparisons only. By contrast, a synchronous origin is observed for the moraines SK-IV and G-IV (18.1–18.2 ka) and for the moraine SK-VI and protalus ramparts (13.5–13.8 ka) in the Úpská jáma Cirque. A missing equivalent for the moraine G-V (15.7 ka) may be attributed to incomplete sampling in the WSK cirque, where samples were collected only from well-preserved moraines. It is probable that the deposition of undated moraine relics SK-V located between the moraines SK-IV (18.1 ka) and SK-VI (13.5 ka) on the bottom of the WSK cirque (Fig. 7) was coincident with the origin of the youngest moraine in the Úpa trough. The uppermost moraines SK-VI (~13.5 ka) and SK-VII (13 ka) in the WSK cirque lack its equivalent in the Úpa Valley, presumably due to unfavourable conditions for glacier development at east- to south-facing cirque slopes during the Lateglacial.

Although none of the two study areas contains dated deposits of all glacial events, the succession of moraines in both areas preserves the best available record for correlation of the Weichselian glaciation in the Krkonoše Mountains. The Snowy Cirques foreland represents more favourable area for reconstructions of older glacial events than the Úpa Valley where trough-confined moraines have been affected by

concentrated runoff. Results of exposure dating presented in Table 3 show that some moraines in the study area correlate well with glacial deposits at other locations within the range. Coincident ages of younger moraine belts within study areas as well as their correlation with well-preserved moraines in the Labe, Łomnica and Łomniczka valleys suggest a synchronous development of glaciers throughout the Krkonoše Mountains. The strongest correlation is observed for moraines dated to 19–17 and 15–13 ka.

5. Discussion

5.1. Early phases of the last glaciation history

The oldest terminal moraines that were deposited in early phases (K-I and K-II) of the last glaciation are located 2 to 4 km below the cirques. In the northern flank of the mountains glaciers descended from the Snowy Cirques to the terminal moraine SK-I at 960 m a.s.l. This relates to the largest extent of the palaeoglacier and is marked by lower and more restricted moraine ridges than the subsequent moraine SK-II that terminates at 930 m a.s.l. The same situation occurred in the eastern part of the mountains where the Łomnica glacier deposited less distinctive moraines first and higher ridges subsequently (Traczyk, 1989). The forefield of the Łomnica cirques is similar to the Snowy Cirque area allowing the spread of glaciers over slightly undulating slopes without large pre-glacial incisions (Fig. 8). By contrast, characteristic valley glaciers confined to incised valleys, existed in the southern flank of the mountains. Extensive glaciers descended the upper Labe and Úpa valleys, where they formed terminal moraines.

Exposure ages obtained for the oldest moraines in the Snowy Cirques and in the Úpa Valley overlap within age uncertainties with ¹⁰Be ages which represent consecutive moraines SK-III and G-III. However, the position and morphology of the oldest moraines suggest, that there should be more prominent difference in the timing of moraines. As exposure ages obtained for the moraines SK-III and G-III are

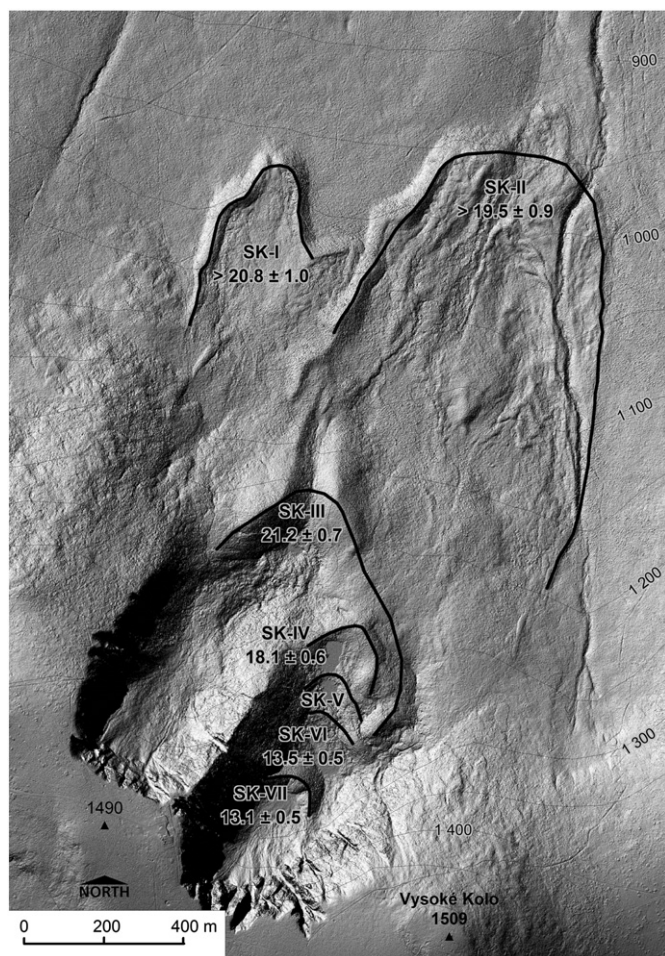


Fig. 7. ^{10}Be exposure ages for moraines in the Snowy Cirques.

consistent with the timing of younger moraines, ages of the two oldest moraines seem to be underestimated. Moreover, the age underestimation of the moraines is apparent from the SH data measured on moraine boulders. The decrease of mean R-values towards lower elevation implies that boulders in the oldest moraines are more weathered than moraine boulders located higher in the study areas. The difference is more pronounced in the Snowy Cirque area where mean R-values obtained for boulders on moraines SK-I and SK-II are significantly lower than values for moraine boulders located in the cirque (Fig. 9). This indicates a time lag between the deposition of the two moraine groups, implying the origin of the oldest moraines before 21–19 ka. On the other hand, R-values obtained for the oldest moraines are higher than R-value (27.3) reported for a bedrock surface in the western Krkonoše Mountains that yields exposure age of 36.5 ± 2.1 ka (Engel, 2007; Table 3). The comparison of R-values and ^{10}Be exposure ages within the mountains suggests that the oldest preserved moraines in the Snowy Cirques and in the Úpa Valley originated between ~36 and 21 ka.

The lower ages of the oldest moraines may be attributed to post-depositional changes of the sampled boulders and/or to the combined effect of vegetation and snow cover shielding. Exposure age of boulders can be modified due to the degradation of moraines, thawing of dead ice, frost-heave, rotation, weathering or erosion of a boulder (e.g. Ivy-Ochs et al., 2007; Putkonen and Swanson, 2003; Zreda and Phillips, 1995). All these spatially diversified processes affect boulders on the moraine surface at various rate yielding different exposure histories. The effect of post-deposition changes on exposure age of moraine boulders in the Krkonoše Mountains was reported from the Łomnica Valley, where the terminal moraine was reworked by gravitational mass-

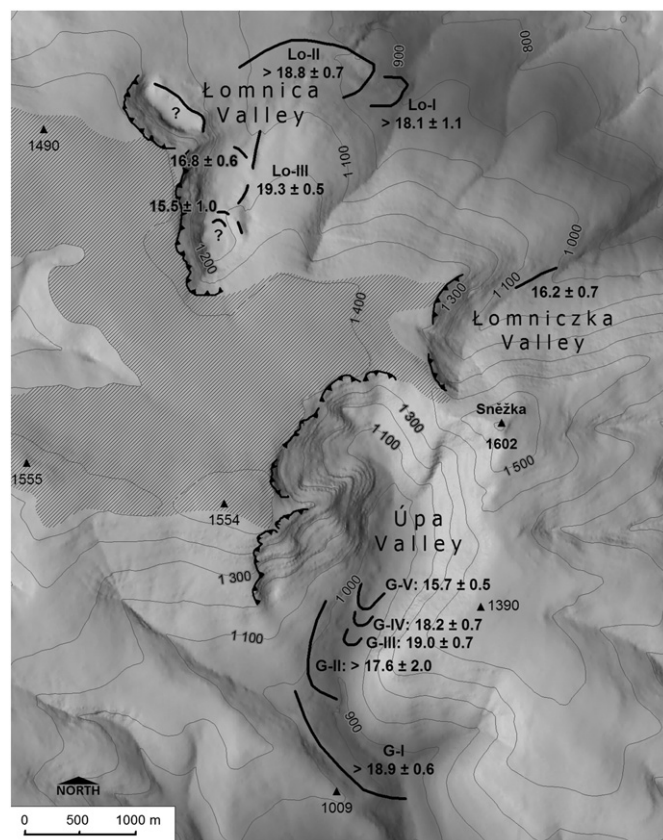


Fig. 8. ^{10}Be exposure ages for moraines in the Úpa, Łomnica and Łomniczka valleys, the eastern Krkonoše Mountains. Oblique hatching indicates high-elevated deflation area from which snow was blown to cirques on the leeward side of the plateau.

movement and frost weathering, yielding lower exposure ages than those obtained for the nearest consecutive moraine (Engel et al., 2011). Within the study area, a Holocene variation of the alpine treeline position and related changes in vegetation cover (Tremli et al., 2008) may have reduced the production rate and contributed to the underestimation of exposure ages. Moreover, local montane forest prolongs the duration of the snow cover by 20–40% (Kwiatkowski and Lucerski, 1979) increasing the snow-shielding effect. Considering that the vegetation cover changes the production rate by 2.5 to 4% (Kubik et al., 1998; Plug et al., 2007) and the effect of snow shielding decreases the apparent age by less than 12% (Benson et al., 2004; Favilli et al., 2009), the minimum exposure age for the two oldest moraines in the study area (SK-I: 24 ka, SK-II: 23 ka, G-I: 22 ka, G-II: 21 ka) would be higher than exposure ages for the nearest consecutive moraines SK-III and G-III.

Within the limits of available data, it appears that the oldest moraines in the study area represent positions of glaciers related to the LGM (sensu Clark et al., 2009). This view contradicts the chronology proposed by Chmal and Traczyk (1999) which attributes the oldest moraines below the Snowy Cirques to the penultimate (Saalian) glaciation. However, this assumption was based on the TL dating of water-laid sediments which often yields an overestimated age (e.g. Aitken, 1998). This is probably the case of the reported TL ages (89 ± 13 ka) which differ substantially from the radiocarbon age of 5320 ± 50 years BP (Chmal and Traczyk, 1999) obtained for the overlying organic sediments.

5.2. Recession of glaciers

The transition from the LGM to the present interglacial is characterised by an overall recession of local glaciers interrupted by a series of

Table 3
Summary of published chronological data related to Quaternary glaciations in the Krkonoše Mountains.

Reference	Dating method	Sample site	Lab. code	Age (years) ^a	Interpretation	Area
Wicik (1986)	Conventional ¹⁴ C	Lake sediment	Hv-11978	11245–10229	Local glacier decay	Mały Staw Lake
Hüttemann and Bortenschlager (1987)	Conventional ¹⁴ C	Peat	VRI-621	8930–8029	Initiation of mire development on high-elevated plateau areas	Labe Plateau
Chmal and Traczyk (1998)	Conventional ¹⁴ C	Lake sediment	Gd-4926	12371–10810	Ice-free cirque	Snowy Cirques
Chmal and Traczyk (1999)	TL	Lake sediment	Lub-635	93000 ± 14000	Local glacier retreat	Snowy Cirques
			Lub-636	87000 ± 13000		
			Lub-637	89000 ± 13000		
Engel et al. (2004)	AMS ¹⁴ C	Lake sediment	Erl-6184	11133–10720	Ice-free cirque	Labe Valley
Braucher et al. (2006)	¹⁰ Be exposure-age	Tor	L-21	36468 ± 2064	Deglaciation of southern edge of high-elevated plateau area	Labe Plateau
		Ploughing block	L-12	29728 ± 1679	Deglaciation of central part of high-elevated plateau area	Labe Plateau
		Moraine boulder	L-19	18734 ± 1457	Moraine deposition in trough	Labe Valley
		Cirque threshold	G-08	16483 ± 2168	Glacier retreat from trough to cirque	Úpa Valley
Engel et al. (2010)	OSL	Cirque floor	G-02	13298 ± 1502	Deglaciation of cirque floor	Úpa Valley
	AMS ¹⁴ C	Fluvial sediment	Shfd06135	27680 ± 1510	Ice-free cirque	Labe Valley
		Lake sediment	Erl-11402	30974–30227		
Engel et al. (2011)	¹⁰ Be exposure-age	Moraine boulder	Lo-3	19319 ± 506	Moraine deposition	Łomnica Valley
			Lo-4	16782 ± 594		
			Lo-2	15496 ± 999		
		Moraine boulder	Lk-1	18144 ± 1058	Moraine deposition in trough	Łomniczka Valley

^a ¹⁴C ages are calibrated using the IntCal09 data set (Reimer et al., 2009), ¹⁰Be ages are recalculated using the procedure described in the current paper.

readvances. The time when glaciers in the Krkonoše Mountains began to retreat from their LGM positions remains undated. However, the first readvance (K-III; Fig. 10) terminated no later than ~19 ka, when glaciers deposited large moraines in front of the north-facing cirques and in the middle part of troughs on the southern flank of the mountains. In the study area, valley glaciers deposited moraines near the outlet of the Snowy Cirques (21.2 ± 0.7 ka) and in the Úpa trough at 910 m a.s.l. The exposure age of 19.0 ± 0.7 ka obtained from moraine relics in the Úpa Valley correlates well with exposure age estimate (19.3 ± 0.5 ka) calculated for the largest lateral moraine in the Łomnica Valley (Engel et al., 2011; Table 3). Moreover, the only well-preserved moraine in the Labe (Labský důl) trough dated by Braucher et al. (2006) probably deposited during the same phase (Table 3).

The subsequent readvance (K-IV) of glaciers in the study area occurred around 18 ka (Fig. 10). In the Snowy Cirques area, glacier deposited morphologically distinct moraine SK-IV at the mouth of the WSK cirque. The exposure age of 18.1 ± 0.6 ka that represents this moraine correlates well with exposure age of 18.2 ± 0.7 ka obtained for the moraine G-IV that terminates at 915 m a.s.l. in the Úpa Valley. The last readvance phase (K-V) before the onset of the Bølling warm interval

dates back to ~16 ka (Fig. 10). At this time, short valley glaciers deposited the uppermost preserved moraine in the Úpa trough (15.7 ± 0.5 ka) and in the Łomniczka Valley (16.2 ± 0.7 ka, Fig. 8). In the Łomnica Valley, glacier snout terminated at the mouth of the cirque as indicated by exposure age of 15.5 ± 1.0 ka obtained from moraine relics at 1160 m a.s.l. (Engel et al., 2011, Table 3). The same phase of origin may be tentatively suggested for relics of the moraine SK-V located between the two Snowy Lakes in the WSK cirque, based on exposure ages of 18.1 ± 0.6 ka and 13.5 ± 0.5 ka obtained for the previous and subsequent moraines, respectively.

5.3. Lateglacial advances

A prominent warming at the onset of the Lateglacial (14.7–11.7 ka) caused rapid environmental changes in the Krkonoše Mountains including permafrost degradation, glacier recession and tundra vegetation establishment (Czudek, 2005; Jankovská, 2007). As a response to increased precipitation and melting of ground ice, intense fluvial erosion dissected periglacial deposits and alluvial fans (Chmal and Traczyk, 1998). The beginning of organic accumulation started in the lower parts of the Western Sudetes Mountains around 13.7 ka, following maximum erosional dissection in Bølling time (Chmal and Traczyk, 1998; Rybníčková and Rybníček, 1996). In plateau areas of the Krkonoše Mountains above 1300 m a.s.l. mountain tundra prevailed (Jankovská, 2007).

Retreat of glaciers back into cirques during the Lateglacial was interrupted by a series of smaller glacier advances K-VI and K-VII (Fig. 10). As a response to a short-lived cold phase (GI-1d, ~14.1–13.9 ka), glacier readvanced in the WSK cirque depositing the moraine SK-VI behind the Snowy Lakes. Exposure age of 13.5 ± 0.5 ka obtained for the moraine supports a tentative hypothesis of its Older Dryas age (Traczyk, 2004). During the same cold phase the moraine that dams Mały Staw Lake in the Łomnica cirque was probably deposited. This is indicated by exposure age of the youngest dated moraine in the cirque (Engel et al., 2011; Table 3). In south-facing cirques, only permanent snowfields existed, as suggested by exposure ages of 13.6 ± 0.4 ka and 14.0 ± 0.5 ka obtained on protalus ramparts in the upper part of the Úpská jáma Cirque.

There is an apparent response of glaciers in the Snowy Cirques to the initial cooling during the YD (GS-1, 12.9–11.7 ka). The readvance (K-VII)

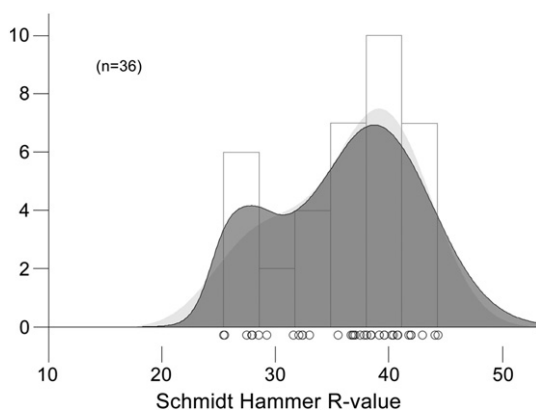


Fig. 9. The probability distribution of R-values measured on moraines in the Snowy Cirques. Dark and light grey shaded areas: Probability Density Plot and Kernel Density Estimation, respectively (Vermeesch, 2012). Grey rectangles: conventional histograms. Open circles: individual SH data.

At the same time, local glaciers readvanced in the Bavarian Forest (Mentlík et al., 2013).

The second readvance (K-IV; ~18 ka) of glaciers in the study area occurred during the transition from warmer episode GS-2b (20.9–17.6 ka) to colder episode GS-2a (17.6–14.7 ka; De Jong et al., 2009). Dry conditions and unstable climate with strong short-term fluctuations prevailed in Central Europe during this episode (Huber et al., 2010; Kerschner et al., 1999); July air temperatures ranged from 13 °C to 15 °C in sites above 500 m (Renssen and Isarin, 2001). The distinct climate deterioration resulted in glacier readvances in the Alps (Gschnitz Stadial; Ivy-Ochs et al., 2008) and Tatra Mountains (Baumgart-Kotarba and Kotarba, 2001; Makos et al., 2012) around 17.5 ka.

The last readvance phase (K-V; ~16 ka) before the onset of the Bølling warm interval could correspond with glacier advances in the Bohemian Forest dated at 16.2 ± 1.4 ka (Mentlík et al., 2013) and with the Clavadel/Senders Stadial (>16 ka; Ivy-Ochs et al., 2008) in the Alps. In southern Bohemia, around 200 km southwards from the Krkonoše Mountains, the climate was cold around 16 ka with maximum July temperatures of 10–11 °C (Pokorný, 2002). Palaeoecological and sedimentary records from eastern alpine forelands indicate a subsequent climatic warming and expansion of lowland forests after 16 ka (Doppler et al., 2011; Vescovi et al., 2007). More than 250 km northwards from the Krkonoše Mountains, the Scandinavian ice sheet readvanced and deposited hummocky moraines in the Pomerania Lakeland around 15.8 ka (Kramarska, 1998; Rinterknecht et al., 2005). The climate was cold and the vegetation treeless in the northern Poland at that time (Wacnik, 2009). After 14.6 ± 0.3 ka the ice sheet margin started to retreat from the Pomeranian Phase position (Rinterknecht et al., 2006).

The initial Lateglacial glacier readvance (K-VI; ~14 ka) is in agreement with a phase of increased snow accumulation, solifluction and frost weathering that was related to the cold and dry conditions of the Older Dryas in the Krkonoše Mountains (Traczyk, 2004). This cold oscillation has also been recognised in numerous radiocarbon-dated fossil records in Central Europe (e.g. Bešta et al., 2009; Bos, 2001; Böttger et al., 1998; Friedrich et al., 2001; Gasirowski and Kupryjanowicz, 2009; Lauterbach et al., 2011; Leroy et al., 2000; Litt et al., 2001; Lotter et al., 1992). At the Swiss Plateau, it was recorded as the Aegelsee Oscillation and dated at ~13.9 cal. ka BP (Lotter et al., 1992). Although the short-lived Older Dryas (GI-1d) belongs to the most dramatic events in the Lateglacial records within Central Europe (Bešta et al., 2009), it is not well documented in the lower parts of the Alps (Daun Phase; van Husen, 2011). However, exposure ages indicate readvances of glaciers around 14 ka in the Bohemian Forest (Mentlík et al., 2013).

The most recent phase (K-VII; ~13 ka) of the glaciation in the Krkonoše Mountains correlates with glacier advances in the Alps (Egesen-max Stadial, 12.2 ± 1.0 ka; Ivy-Ochs et al., 2009) and Carpathian Mountains (Baumgart-Kotarba and Kotarba, 2001; Rinterknecht et al., 2011) related to the early GS-1 (YD) cold event in Greenland (Walker et al., 1999). In Central Europe, the cooling is represented by a marked decrease in the $\delta^{18}\text{O}$ of lake sediments (Böttger et al., 1998; Lauterbach et al., 2011; Lotter et al., 1992; Schwander et al., 2000), rapid environmental changes (Ammann et al., 2000; Bos, 2001; Brauer et al., 1999; Goslar et al., 1999; Ilyashuk et al., 2009; Leroy et al., 2000; Litt et al., 2001, 2003; Magny, 2001; Pokorný and Jankovská, 2000; Schaub et al., 2008; Wennrich et al., 2005) and alpine glacier advances (Ivy-Ochs et al., 2009). During the coldest phase of the YD the mean July air temperature was estimated around 13 °C in northern Poland (Wacnik, 2009) and 12 °C in southern Bohemia (Pokorný, 2002). In the Krkonoše Mountains, the cooling generated permafrost aggradation, glacier readvance and periglacial environment expansion (Czudek, 2005; Traczyk, 2004). A phase of enhanced formation of patterned grounds, proglacial ramparts, solifluction lobes and rock glaciers was attributed to the YD (Traczyk, 2004; Traczyk and Migoń, 2000). In addition, a phase of frequent gravity-driven geomorphic events was proposed for the paraglacial period (Migoń, 2008), which occurred after the local glacier retreat at the Lateglacial/

Holocene transition. A mountain tundra with a very rare vegetation cover spread over the central part of the mountains at that time (Jankovská, 2007).

6. Conclusions

^{10}Be exposure ages obtained from moraines in the Snowy Cirques area and in the Úpa Valley have revealed a chronology of the last glaciation in the Krkonoše Mountains. The most recent glacial episode began after the termination of an ice-free period around 27.7 ± 1.5 ka (Engel et al., 2010) and lasted until the YD. The precise timing of the initial phase of glaciation remains unclear because exposure ages obtained for the oldest moraines in the study area are underestimated. Considering spatially diversified shielding effect of vegetation and snow cover on production rate (Benson et al., 2004; Favilli et al., 2009; Kubik et al., 1998), exposure age estimates of 24–21 ka for the oldest moraines fall within the LGM. Subsequent recession of local glaciation was interrupted by glacier readvances around 19, 18, 16, 14 and 13 ka. The timing of these events correlates with glacier advances in the Alps (e.g. Ivy-Ochs et al., 2009) and Bavarian/Bohemian Forest (Mentlík et al., 2013; Reuther et al., 2011). Our findings suggest, that local glaciation in the Krkonoše Mountains was possibly more extensive during the LGM than in earlier phases of the Weichselian glacial. This suggestion is in agreement with the evolution of glaciations in the Vosges (Mercier and Jeser, 2004), Jura (Buon cristiani and Campy, 2011) and Alps (van Husen, 2011), but contradicts the early and/or middle Weichselian timing of the most extensive glaciation in the Bavarian Forest (Reuther, 2007) and Tatra Mountains (Baumgart-Kotarba and Kotarba, 2001).

The position and size of moraines indicate that only small cirque glaciers existed during the Lateglacial in the Krkonoše Mountains. The evidence of the last glacier oscillation in the Snowy Cirques shows remarkable similarities with that of the Łomnica glacier in the eastern part of the mountains. The mean age of 12.9 ± 0.7 ka for the youngest moraine in the Snowy Cirques, the age constraints of the uppermost moraine in the Łomnica Valley and the position of these moraines close to cirque headwall show that the last glacier oscillation occurred during the early GS-1 cold event (YD). The lack of moraines in a similar position in south-facing cirques and the exposure age of 13.8 ± 0.4 ka for proglacial ramparts at the foot of the Úpská jáma Cirque headwall indicate that the last glacier advance occurred in more sheltered north- to east-facing cirques only. The asymmetric pattern of glaciation suggests that temperature conditions related to different slope aspect controlled glacier advances during the Lateglacial. Age and position of the youngest moraines confirm the decay of local glaciers during the Lateglacial/Holocene transition which was indicated by chronological data from the Labe, Łomnica and Úpa valleys.

Acknowledgements

The study was supported by the Czech Science Foundation (project P209/10/0519). ASTER AMS national facility (CEREGE, Aix en Provence) is supported by the INSU/CNRS, the French Ministry of Research and Higher Education, IRD and CEA. The Administrations of both the Czech and Polish national parks are thanked for providing permission to work in the region. Special Thanks to MGGP Aero (Poland) for permission to use their aerial image. Finally, the authors would like to thank Jeremy Everest for helpful comments on an earlier version of the manuscript.

References

- Aitken, M.J., 1998. *Introduction to Optical Dating*. Oxford University Press, Oxford.
- Allen, R., Siegert, M., Payne, A.J., 2008. Reconstructing glacier-based climates of LGM Europe and Russia – part 1: numerical modelling and validation methods. *Clim. Past* 4, 235–248.

- Ammann, B., Birks, H.J.B., Brooks, S.J., Eicher, U., von Grafenstein, U., Hofmann, W., Lemdahl, G., Schwander, J., Tobolski, K., Wick, L., 2000. Quantification of biotic responses to rapid climatic changes around the Younger Dryas – a synthesis. *Palaeogeogr. Palaeoclimatol. Palaeoecol.* 159 (3–4), 313–347.
- Andersen, K.K., Svensson, A., Johnsen, S.J., Rasmussen, S.O., Bigler, M., Röthlisberger, R., Ruth, U., Siggaard-Andersen, M.-L., Steffensen, J.P., Dahl-Jensen, D., Vinther, B.M., Clausen, H.B., 2006. The Greenland ice core chronology 2005, 15–42 ka. Part 1: constructing the time scale. *Quat. Sci. Rev.* 25 (23–24), 3246–3257.
- Andreoli, R., Rosique, T., Schmidt, M., Carozza, J.-M., 2006. La dernière phase glaciaire du haut bassin de la Fecht (Vosges, France): dynamique de l'englacement et chronologie relative de la déglaciation. *Géomorphologie: Relief, Processus, Environnement*, 2006 (1), pp. 23–36.
- Arnold, M., Merchel, S., Bourlès, D.L., Braucher, R., Benedetti, L., Finkel, R.C., Aumaître, G., Gottang, A., Klein, M., 2010. The French accelerator mass spectrometry facility ASTER: improved performance and developments. *Nucl. Instrum. Methods Phys. Res., Sect. B* 268, 1954–1959.
- Awdankiewicz, M., Awdankiewicz, H., Kryza, R., Rodionov, N., 2010. SHRIMP zircon study of a micromonzodiorite dyke in the Karkonosze Granite, Sudetes (SW Poland): age constraints for late Variscan magmatism in Central Europe. *Geol. Mag.* 147 (1), 77–85.
- Balco, G., Briner, J., Finkel, R.C., Rayburn, J.A., Ridge, J.C., Schaefer, J.M., 2009. Regional beryllium-10 production rate calibration for late-glacial northeastern North America. *Quat. Geochronol.* 4 (2), 93–107.
- Baumgart-Kotarba, M., Kotarba, A., 2001. Deglaciation of the Sucha Woda and Pańszczyca valleys in the Polish High Tatras. *Stud. Geomorph. Carpatho-Balkan.* 35, 7–38.
- Benson, L., Madole, R., Phillips, W., Landis, G., Thomas, T., Kubik, P., 2004. The probable importance of snow and sediment shielding on cosmogenic ages of north-central Colorado Pinedale and pre-Pinedale moraines. *Quat. Sci. Rev.* 23 (1–2), 193–206.
- Bešta, T., Šafránková, J., Pouzar, M., Novák, J., Nováková, K., 2009. Late Pleistocene–Early Holocene transition recorded in the sediments of a former shallow lake in the Czech Republic. *Hydrobiologia* 631 (1), 107–120.
- Bohncke, S.J.P., Bos, J.A.A., Engels, S., Heiri, O., Kasse, C., 2008. Rapid climatic events as recorded in Middle Weichselian thermokarst lake sediments. *Quat. Sci. Rev.* 27 (1–2), 162–174.
- Bos, J.A.A., 2001. Lateglacial and Early Holocene vegetation history of the northern Wetterau and the Amöneburger Basin (Hessen), central-west Germany. *Rev. Palaeobot. Palynol.* 115 (3–4), 177–212.
- Böttger, T., Hiller, A., Junge, F.W., Litt, T., Mania, D., Scheele, N., 1998. Late Glacial stable isotope record, radiocarbon stratigraphy, pollen and mollusc analyses from the Geiseltale area, Central Germany. *Boreas* 27 (2), 88–100.
- Braucher, R., Kalvoda, J., Bourlès, D., Brown, E., Engel, Z., Mercier, J.L., 2006. Late Pleistocene deglaciation in the Vosges and the Krkonoše mountains: correlation of cosmogenic ¹⁰Be exposure ages. *Geogr. Čas.* 58 (1), 3–14.
- Braucher, R., Merchel, S., Borgomano, J., Bourlès, D.L., 2011. Production of cosmogenic radionuclides at great depth: a multi element approach. *Earth Planet. Sci. Lett.* 309 (1–2), 1–9.
- Brauer, A., Endres, C., Günther, C., Litt, T., Stebich, M., Negendank, J., 1999. High resolution sediment and vegetation responses to Younger Dryas climate change in varved sediments from Meerfelder Maar, Germany. *Quat. Sci. Rev.* 18 (3), 321–329.
- Briner, J.P., Young, N.E., Goehring, B.M., Schaefer, J.M., 2012. Constraining Holocene ¹⁰Be production rates in Greenland. *J. Quat. Sci.* 27 (1), 2–6.
- Buoncrisiani, J.-F., Campy, M., 2011. Quaternary glaciations in the French Alps and Jura. In: Ehlers, J., Gibbard, P.L., Hughes, P.D. (Eds.), *Quaternary Glaciations – Extent and Chronology*. Elsevier, Amsterdam, pp. 117–126.
- Carr, S.J., Engel, Z., Kalvoda, J., Parker, A., 2002. Sedimentary evidence to suggest extensive glaciation of the Úpa Valley, Krkonoše Mountains, Czech Republic. *Z. Geomorphol.* 46 (4), 523–537.
- Carr, S.J., Engel, Z., Kalvoda, J., Parker, A., 2007. Towards a revised model of Late Quaternary mountain glaciation in the Krkonoše Mountains, Czech Republic. In: Goudie, A.S., Kalvoda, J. (Eds.), *Geomorphological Variations*. P3K, Praha, pp. 253–268.
- Chmal, H., Traczyk, A., 1993. Plejstoceńskie lodowce gruzowe w Karkonoszach. *Czas. Geogr.* 64 (3–4), 253–262.
- Chmal, H., Traczyk, A., 1998. Postglacjalny rozwój rzeźby Karkonoszy i Gór Izerskich w świetle analizy osadów rzecznych, jeziornych i stokowych. In: Sarosiek, J., Śtursa, J. (Eds.), *Geoekologiczne Problemy Karkonoszy*. Wyd. Acarus, Poznań, pp. 81–87.
- Chmal, H., Traczyk, A., 1999. Die Vergletscherung des Riesengebirges. *Z. Geomorphol. Suppl.* 113, 11–17.
- Chmeleff, J., von Blanckenburg, F., Kossert, K., Jakob, D., 2010. Determination of the ¹⁰Be half-life by multicollector ICP-MS and liquid scintillation counting. *Nucl. Instrum. Methods B* 263 (2), 192–199.
- Choiński, A., 2003. Changes in bathymetry of Mały and Wielki Staw in the Karkonosze (Giant) Mountains. *Limnol. Rev.* 3, 37–40.
- Clark, P.U., Dyke, A.S., Shakun, J.D., Carlson, A.E., Clark, J., Wohlfarth, B., Mitrovica, J.X., Hostetler, S.W., McCabe, A.M., 2009. The Last Glacial Maximum. *Science* 325 (5941), 710–713.
- Corcho Alvarado, C., Leuenberger, J.A., Kipfer, M., Paces, R., Purtschert, R., 2011. Reconstruction of past climate conditions over central Europe from groundwater data. *Quat. Sci. Rev.* 30 (23–24), 3423–3429.
- Czech Geological Survey, 2004. *GeoCR 50 Geodatabase of Geological Maps at a Scale of 1:50,000*. Praha, Czech Geological Survey.
- Czudek, T., 2005. *Vývoj reliéfu České republiky v kvartéru*. Moravské zemské muzeum, Brno.
- Danišík, M., Migoń, P., Kuhlemann, J., Evans, N.J., Dunkl, I., Frisch, W., 2010. Thermochronological constraints on the long-term erosional history of the Karkonosze Mts., Central Europe. *Geomorphology* 117 (1–2), 78–89.
- De Jong, M.G.G., Nio, D.S., Böhm, A.R., Seijmonsbergen, H.C., De Graaff, L.W.S., 2009. Resolving climate change in the period 15–23 ka in Greenland ice cores: a new application of spectral trend analysis. *Terra Nova* 21 (2), 137–143.
- Delmas, M., Gunnell, Y., Braucher, R., Calvet, M., Bourlès, D., 2008. Exposure age chronology of the last glaciation in the eastern Pyrenees. *Quat. Res.* 69 (2), 231–241.
- Doppler, G., Kroemer, E., Rogner, K., Wallner, J., Jerz, H., Grotenthaler, W., 2011. Quaternary stratigraphy of Southern Bavaria. *Quat. Sci. J.* 60 (2–3), 329–365.
- Dunne, J., Elmore, D., Muzikar, P., 1999. Scaling factors for the rates of production of cosmogenic nuclides for geometric shielding and attenuation at depths on sloped surfaces. *Geomorphology* 27 (1–2), 3–11.
- Ehlers, J., Gibbard, P.L., Hughes, P.D. (Eds.), 2011. *Quaternary Glaciations – Extent and Chronology*. Elsevier, Amsterdam.
- Engel, Z., 2007. Measurement and age assignment of intact rock strength in the Krkonoše Mountains, Czech Republic. *Z. Geomorphol.* 51 (Suppl. Iss. 1), 69–80.
- Engel, Z., Treml, V., Křížek, M., Jankovská, V., 2004. Lateglacial/Holocene sedimentary record from the Labe source area, the Krkonoše Mts. *Acta Univ. Carol. Geogr.* 39 (1), 95–109.
- Engel, Z., Nývlt, D., Křížek, M., Treml, V., Jankovská, V., Lisá, L., 2010. Sedimentary evidence of landscape and climate history since the end of MIS 3 in the Krkonoše Mountains, Czech Republic. *Quat. Sci. Rev.* 29 (7–8), 913–927.
- Engel, Z., Traczyk, A., Braucher, R., Woronko, B., Křížek, M., 2011. Use of ¹⁰Be exposure ages and Schmidt hammer data for correlation of moraines in the Krkonoše Mountains. *Z. Geomorphol.* 55 (2), 175–196.
- Engels, S., Bohncke, S.J.P., Bos, J.A.A., Heiri, O., Vandenberghe, J., Wallinga, J., 2008. Environmental inferences and chironomid-based temperature reconstructions from fragmentary records of the Weichselian Early Glacial and Pleniglacial periods in the Niederlausitz area (eastern Germany). *Palaeogeogr. Palaeoclimatol. Palaeoecol.* 260 (3–4), 405–416.
- Favilli, F., Egli, M., Brandová, D., Ivy-Ochs, S., Kubik, P.W., Cherubini, P., Mirabella, A., Sartori, G., Giaccari, D., Haeblerli, W., 2009. Combined use of relative and absolute dating techniques for detecting signals of Alpine landscape evolution during the late Pleistocene and early Holocene. *Geomorphology* 112 (1–2), 48–66.
- Fenton, C.R., Hermanns, R.L., Blikra, L.H., Kubik, P.W., Bryant, C., Niedermann, S., Meixner, A., Goethals, M.M., 2011. Regional ¹⁰Be production rate calibration for the past 12 ka deduced from the radiocarbon-dated Grøtlandsura and Russenes rock avalanches at 69°N, Norway. *Quat. Geochronol.* 6 (5), 437–452.
- Frechen, M., Zander, A., Čilek, V., Ložek, V., 1999. Loess chronology of the Last interglacial/glacial cycle in Bohemia and Moravia, Czech Republic. *Quat. Sci. Rev.* 18 (13), 1467–1493.
- Friedrich, M., Kromer, B., Kaiser, K.F., Spurk, M., Hughen, K.A., Johnsen, S.J., 2001. High-resolution climate signals in the Bolling-Allerød Interstadial (Greenland Interstadial 1) as reflected in European tree-ring chronologies compared to marine varves and ice-core records. *Quat. Sci. Rev.* 20 (11), 1223–1232.
- Gasiorowski, M., Kupryjanowicz, M., 2009. Lake-peat bog transformation recorded in the sediments of the Stare Biele mire (Northeastern Poland). *Hydrobiologia* 631 (1), 143–154.
- Gibbons, A.B., Megeath, J.D., Pierce, K.L., 1984. Probability of moraine survival in a succession of glacial advances. *Geology* 12 (6), 327–330.
- Głowicki, B., 1977. *Struktura przestrzenna pokrywy śnieżnej w górnej części zlewni Potoku Szrenickiego*. Materiały badawcze IMGW. Ser. Meteorol. 77–95.
- Głowicki, B., 2005. *Klimat Karkonoszy*. In: Mierzejewski, M.P. (Ed.), *Karkonosze*. Wydawnictwo Uniwersytetu Wrocławskiego, Wrocław, pp. 381–397.
- Goehring, B.M., Lohne, Ø.S., Mangerud, J., Svendsen, J.I., Gyllencreutz, R., Schaefer, J., Finkel, R., 2012. Late Glacial and Holocene beryllium-10 production rates for western Norway. *J. Quat. Sci.* 27 (1), 89–96.
- Goslar, T., Bałaga, K., Arnold, M., Tisnerat, N., Starnawska, E., Kuźniarski, M., Chróst, L., Walanus, A., Więckowski, K., 1999. Climate-related variations in the composition of the Late Glacial and early Holocene sediments of Lake Perespilno (eastern Poland). *Quat. Sci. Rev.* 18 (7), 899–911.
- Gosse, J.C., 2005. The contributions of cosmogenic nuclides to unraveling alpine paleoglaciation histories. In: Huber, U.M., Bugmann, H.K.M., Reasoner, M.A. (Eds.), *Global Change and Mountain Regions: An Overview of Current Knowledge*. Springer, Dordrecht, pp. 39–50.
- Gosse, J.C., Phillips, F.M., 2001. Terrestrial in situ cosmogenic nuclides: theory and application. *Quat. Sci. Rev.* 20 (14), 1475–1560.
- Gosse, J.C., Evenson, E.B., Klein, J., Lawn, B., Middleton, R., 1995. Precise cosmogenic ¹⁰Be measurements in western North America: support for a global Younger Dryas cooling event. *Geology* 23 (10), 877–880.
- Gramsz, R., Potocka, J., Kociánová, M., 2010. Istotne cechy klimatu Karkonoszy w porównaniu z północną Skandynawią wzdłuż profilu Andoya – Kiruna. *Opera Corcon.* 47, 29–54.
- Halášová, O., Hančarová, E., Vašková, I., 2007. Časová a prostorová variabilita vybraných klimatologických a hydrologických prvků na území Krkonoš za období 1961–2000. *Opera Corcon.* 44 (1), 171–178.
- Hallet, B., Putkonen, J.K., 1994. Surface dating of dynamic landforms: young boulders on aging moraines. *Science* 265 (5174), 937–940.
- Heine, K., Reuther, A.U., Thieke, H.U., Schulz, R., Schlaak, N., Kubik, P.W., 2009. Timing of Weichselian ice marginal positions in Brandenburg (northeastern Germany) using cosmogenic in situ ¹⁰Be. *Z. Geomorphol.* 53 (4), 433–454.
- Heyman, B.M., Heyman, J., Fickert, T., Harbor, J.M., 2013. Paleo-climate of the central European uplands during the Last Glacial Maximum based on glacier mass-balance modelling. *Quat. Res.* 79 (1), 49–54.
- Huber, K., Weckström, K., Drescher-Schneider, R., Knoll, J., Schmidt, J., Schmidt, R., 2010. Climate changes during the Last Glacial Termination inferred from diatom-based temperatures and pollen in a sediment core from Längsee (Austria). *J. Paleolimnol.* 43 (1), 131–147.
- Hüttemann, H., Bortenschlager, S., 1987. Beiträge zur Vegetationsgeschichte Tirols VI: Reisengebirge, Hohe Tatra–Zillertal, Kuhtai. *Ber. Naturwiss. Med. Ver. Innsbruck* 74, 81–112.

- Ilyashuk, B., Gobet, E., Heiri, O., Lotter, A.F., van Leeuwen, J.F.N., van der Knaap, W.O., Ilyashuk, E., Oberli, F., Ammann, B., 2009. Lateglacial environmental and climatic changes at the Maloja Pass, Central Swiss Alps, as recorded by chironomids and pollen. *Quat. Sci. Rev.* 28 (13–14), 1340–1353.
- Issmer, K., 1999. Vistulian loess deposits of the Dalków Hills. *Geol. Q.* 43 (1), 113–120.
- Ivy-Ochs, S., Kober, F., 2008. Surface exposure dating with cosmogenic nuclides. *Eiszeit. Gegenw.* 57 (1–2), 179–209.
- Ivy-Ochs, S., Schäfer, J., Kubik, P.W., Synal, H.A., Schlüchter, C., 2004. Timing of deglaciation on the northern Alpine foreland (Switzerland). *Eclogae Geol. Helv.* 97 (1), 47–55.
- Ivy-Ochs, S., Kerschner, H., Schlüchter, C., 2007. Cosmogenic nuclides and the dating of Lateglacial and Early Holocene glacier variations: the Alpine perspective. *Quat. Int.* 164–165, 53–63.
- Ivy-Ochs, S., Kerschner, H., Reuther, A., Preusser, F., Heine, K., Maisch, M., Kubik, P.W., Schlüchter, C., 2008. Chronology of the last glacial cycle in the European Alps. *J. Quat. Sci.* 23 (6–7), 559–573.
- Ivy-Ochs, S., Kerschner, H., Maisch, M., Christl, M., Kubik, P.W., Schlüchter, C., 2009. Latest Pleistocene and Holocene glacier variations in the European Alps. *Quat. Sci. Rev.* 28 (21–22), 2137–2149.
- Jahn, A., 1969. Some problems concerning slope development in the Sudetes. *Biul. Peryglac.* 18, 331–348.
- Jahn, A., 1977. The permafrost active layer in the Sudety Mountains during the last glaciation. *Quaest. Geogr.* 4, 29–42.
- Jankovská, V., 2004. Krkonoše v době poledové: vegetace a krajina. *Opera Corcon.* 41, 111–123.
- Jankovská, V., 2007. Giant Mountains and pollen analytical research: new results and interesting palaeobotanical findings. *Opera Corcon.* 44, 207–222.
- Jeník, J., 1961. Alpínská vegetace Krkonoš, Králíčského Sněžníku a Hrubého Jeseníku. *Nakl. Čs. akad. věd, Praha.*
- Jeník, J., Lokvenc, T., 1962. Die alpine Waldgrenze im Krkonoše Gebirge. *Nakl. Čs. akad. věd, Praha.*
- Kelly, M.A., von Blanckenburg, F., Kubik, P.W., Schlüchter, C., 2002. Surface exposure ages of high elevation glacial erosion landforms: an attempt to date deglaciation of the Last Glacial Maximum ice cap in the western Swiss Alps. *Geochim. Cosmochim. Acta* 66 (S1), A392.
- Kerschner, H., 2009. Gletscher und Klima im Alpenin Spätglazial und frühen Holozän. In: Schmidt, R., Matulla, Ch., Psenner, R. (Eds.), *Klimawandel in Österreich*. Innsbruck University Press, Innsbruck, pp. 5–26.
- Kerschner, H., Ivy-Ochs, S., Schlüchter, C., 1999. Paleoclimatic interpretation of the early late-glacial glacier in the Gschnitz Valley, Central Alps, Austria. *Ann. Glaciol.* 28 (1), 135–140.
- Korschinek, G., Bergmaier, A., Faestermann, T., Gerstmann, U.C., Knie, K., Rugel, G., Wallner, A., 2010. A new value for the half-life of ^{10}Be by heavy-ion elastic recoil detection and liquid scintillation counting. *Nucl. Instrum. Methods B* 268 (2), 187–191.
- Kramarska, R., 1998. Origin and development of the Odra Bank in the light of the geologic structure and radiocarbon dating. *Geol. Q.* 42 (3), 277–288.
- Křížek, M., Vočadlova, K., Engel, Z., 2012. Cirque overdeepening and their relationship to morphometry. *Geomorphology* 139–140, 495–505.
- Krzyszowski, D., 1990. Middle and Late Weichselian stratigraphy and palaeoenvironments in central Poland. *Boreas* 19 (4), 333–350.
- Krzyszowski, D., Kuszell, T., 2007. Middle and Upper Weichselian Pleniglacial fluvial erosion and sedimentation phases in south western Poland, and their relationship to Scandinavian ice sheet build-up and retreat. *Ann. Soc. Geol. Pol.* 77 (1), 17–38.
- Kubik, P.W., Ivy-Ochs, S., Masarik, J., Frank, M., Schlüchter, C., 1998. ^{10}Be and ^{26}Al production rates deduced from an instantaneous event within the dendro-calibration curve, the landslide of Köfels, Ötz Valley, Austria. *Earth Planet. Sci. Lett.* 161 (1), 231–241.
- Kuneš, P., Pokorný, P., Jankovská, V., 2007. Post-glacial vegetation development in sandstone areas of the Czech Republic. In: Härtel, H., Čížek, V., Herben, T., Jackson, A., Williams, R. (Eds.), *Sandstone Landscapes*. Academia, Praha, pp. 244–257.
- Kwiatkowski, J., Lucerski, P., 1979. Warunki śniegowe i narciarskie na północnych stokach Karkonoszy. *Opera Corcon.* 16, 51–71.
- Lauterbach, S., Brauer, A., Andersen, N., Danielopol, D.L., Dulski, P., Hüs, M., Milecka, K., Namiotko, T., Plessen, B., von Grafenstein, U., DecLakes participants, 2011. Multi-proxy evidence for early to mid-Holocene environmental and climatic changes in northeastern Poland. *Boreas* 40 (1), 57–72.
- Leroy, S.A.G., Zolitschka, B., Negendank, J.F.W., Seret, G., 2000. Palynological analysis in the laminated sediment of Lake Holzmaar (Eifel, Germany): duration of Late glacial and Preboreal biozones. *Boreas* 29 (1), 52–71.
- Leśniewicz, S., 1996. Morfologia peryglacjalna północnych stoków Łabskiego Szczytu w Karkonoszach. *Acta Univ. Wratisl. Prace Inst. Geogr.* A8, 81–91.
- Litt, T., Brauer, A., Goslar, T., Merkt, J., Balaga, K., Müller, H., Ralska-Jasiewiczowa, H., Stebich, M., Negendank, J.F.W., 2001. Correlation and synchronisation of Lateglacial continental sequences in northern central Europe based on annually laminated lacustrine sediments. *Quat. Sci. Rev.* 20 (11), 1233–1249.
- Litt, T., Schmincke, H.-U., Kromer, B., 2003. Environmental response to climatic and volcanic events in central Europe during the Weichselian Lateglacial. *Quat. Sci. Rev.* 22 (1), 7–32.
- Lotter, A.F., Eicher, U., Siegenthaler, U., Birks, H.J.B., 1992. Late-glacial climatic oscillations as recorded in Swiss lake sediments. *J. Quat. Sci.* 7 (3), 187–204.
- Lowe, J.J., Rasmussen, S.O., Björck, S., Hoek, W.Z., Steffensen, J.P., Walker, M.J.C., Yu, Z.C., INTIMATE group, 2008. Synchronisation of palaeoenvironmental events in the North Atlantic region during the Last Termination: a revised protocol recommended by the INTIMATE group. *Quat. Sci. Rev.* 27 (1–2), 6–17.
- Magny, M., 2001. Palaeohydrological changes as reflected by lake-level fluctuations in the Swiss Plateau, the Jura Mountains and the northern French Pre-Alps during the Last Glacial–Holocene transition: a regional synthesis. *Global Planet. Change* 30 (1–2), 85–101.
- Makos, M., Nitychoruk, J., Zreda, M., 2012. Deglaciation chronology and paleoclimate of the Pięciu Stawów Polskich/Roztoki Valley, High Tatra Mountains, Western Carpathians, since the Last Glacial Maximum, inferred from ^{36}Cl exposure dating and glacier-climate modelling. *Quat. Int.* <http://dx.doi.org/10.1016/j.quaint.2012.01.016>.
- Marks, L., 2011. Quaternary glaciations in Poland. In: Ehlers, J., Gibbard, P.L., Hughes, P.D. (Eds.), *Quaternary Glaciations – Extent and Chronology*. Elsevier, Amsterdam, pp. 299–304.
- Martini, A., 1970. Sudetic tors formed under periglacial conditions. *Biul. Peryglac.* 19, 351–369.
- Mentlík, P., Engel, Z., Braucher, R., Léanni, K., Aster Team, 2013. Chronology of the Late Weichselian glaciation in the Bohemian Forest in Central Europe. *Quat. Sci. Rev.* 65 (April), 120–128.
- Mercier, J.-L., Jeser, N., 2004. The glacial history of the Vosges Mountains. In: Ehlers, J., Gibbard, P.L. (Eds.), *Quaternary Glaciations – Extent and Chronology*. Part I. Elsevier, Amsterdam, pp. 113–118.
- Migoń, P., 1996. Tertiary etch surfaces in the Sudetes Mountains, SW Poland – a contribution to the pre-Quaternary morphology of Central Europe. In: Widdowson, M. (Ed.), *Palaeosurfaces: Recognition, Reconstruction and Palaeoenvironmental Interpretation*. Geological Society, London, pp. 187–202.
- Migoń, P., 1999. The role of preglacial relief in the development of mountain glaciation in the Sudetes, with the special reference to the Karkonosze Mountains. *Z. Geomorphol. Suppl. Bd.* 113, 33–44.
- Migoń, P., 2008. High-mountain elements in the geomorphology of the Sudetes, the Bohemian Massif, and their significance. *Geogr. Pol.* 81 (1), 101–116.
- Migoń, P., Knapik, R., Jala, Z., Remisz, J., 2010. Contemporary evolution of talus slopes in the Wielki Śnieżny Kocioł Glacial Cirque. *Opera Corcon.* 47 (1), 63–74.
- Mol, J., 1997. Fluvial response to Weichselian climate changes in the Niederlausitz (Germany). *J. Quat. Sci.* 12 (1), 43–60.
- Monegato, G., Ravazzi, C., Donegana, M., Pini, R., Calderoni, G., Wick, L., 2007. Evidence of a twofold glacial advance during the Last Glacial Maximum in the Tagliamento end moraine system (eastern Alps). *Quat. Res.* 68 (2), 284–302.
- Moon, B.P., 1984. Refinement of a technique for determining rock mass strength for geomorphological purposes. *Earth Surf. Proc. Land.* 9 (2), 189–193.
- Nývlt, D., Engel, Z., Tyráček, J., 2011. Pleistocene glaciations of Czechia. In: Ehlers, J., Gibbard, P.L., Hughes, P.D. (Eds.), *Quaternary Glaciations – Extent and Chronology*. Elsevier, Amsterdam, pp. 37–46.
- Partsch, J., 1882. Die Gletscher der Vorzeit in den Karpathen und den Mittelgebirgen Deutschlands. Wilhelm Koebner, Breslau.
- Pellegrini, G.B., Albanese, D., Bertoldi, R., Surian, N., 2005. La deglaciazione alpina nel Vallone Bellunese, Alpi meridionali orientali. *Geogr. Fis. Din. Quat. Suppl.* 7, 271–280.
- Peltier, W.R., Fairbanks, R.G., 2006. Global glacial ice volume and Last Glacial Maximum duration from an extended Barbados sea level record. *Quat. Sci. Rev.* 25 (23–24), 3322–3337.
- Phillips, F.M., Zreda, M.G., Smith, S.S., Elmore, D., Kubik, P.W., Sharma, P., 1990. Cosmogenic Chlorine-36 chronology for glacial deposits at Bloody Canyon, Eastern Sierra Nevada. *Science* 248 (4962), 1529–1532.
- Plug, L.J., Gosse, J.C., McIntosh, J.J., Bigley, R., 2007. Attenuation of cosmic ray flux in temperate forest. *J. Geophys. Res.* 112, F02022.
- Pokorný, P., 2002. A high-resolution record of Late-Glacial and Early-Holocene climatic and environmental change in the Czech Republic. *Quat. Int.* 91 (1), 101–122.
- Pokorný, P., Jankovská, V., 2000. Long-term vegetation dynamics and the infilling process of a former lake (Švarcenberk, Czech Republic). *Folia Geobot.* 35 (4), 433–457.
- Putkonen, J., Swanson, T., 2003. Accuracy of cosmogenic ages for moraines. *Quat. Res.* 59 (2), 255–261.
- Ralska-Jasiewiczowa, M., Latalowa, M., Wasylkowska, K., Tobolski, K., Madeyska, E., Wright, H.E., Turner, C. (Eds.), 2004. Late Glacial and Holocene History of Vegetation in Poland Based on Isopollen Maps. Polish Academy of Sciences, Kraków.
- Rasmussen, S.O., Andersen, K.K., Svensson, A.M., Steffensen, J.P., Vinther, B.M., Clausen, H.B., Siggaard-Andersen, M.-L., Johnsen, S.J., Larsen, L.B., Dahl-Jensen, D., Bigler, M., Röthlisberger, R., Fischer, H., Goto-Azuma, K., Hansson, M.E., Ruth, U., 2006. A new Greenland ice core chronology for the Last Glacial Termination. *J. Geophys. Res.* 111, D06102.
- Reimer, P.J., Baillie, M.G.L., Bard, E., Bayliss, A., Beck, J.W., Blackwell, P.G., Bronk Ramsey, C., Buck, C.E., Burr, G.S., Edwards, R.L., Friedrich, M., Grootes, P.M., Guilderson, T.P., Hajdas, I., Heaton, T.J., Hogg, A.G., Hughes, K.A., Kaiser, K.F., Kromer, B., McCormac, F.G., Manning, S.W., Reimer, R.W., Richards, D.A., Southon, J.R., Talamo, S., Turney, C.S.M., van der Plicht, J., Weyhenmeyer, C.E., 2009. IntCal09 and Marine09 radiocarbon age calibration curves, 0–50,000 years cal BP. *Radiocarbon* 51 (4), 1111–1150.
- Renssen, H., Isarin, R.F.B., 2001. The two major warming phases of the last deglaciation at 14.7 and 11.5 ka cal BP in Europe: climate reconstructions and AGCM experiments. *Global Planet. Change* 30 (1–2), 117–153.
- Reuther, A.U., 2007. Surface Exposure Dating of Glacial Deposits from the Last Glacial Cycle. Schweizerbart, Stuttgart.
- Reuther, A.U., Fiebig, M., Ivy-Ochs, S., Kubik, P.W., Reitner, J.M., Jerz, H., Heine, K., 2011. Deglaciation of a large piedmont lobe glacier in comparison with a small mountain glacier – new insight from surface exposure dating. Two studies from SE Germany. *Quat. Sci. J.* 60 (2–3), 248–269.
- Rinterknecht, V.R., Marks, L., Piotrowski, J.A., Raisbeck, G.M., Yiu, F., Brook, E.J., Clark, P.U., 2005. Cosmogenic ^{10}Be ages on the Pomeranian Moraine, Poland. *Boreas* 34 (2), 186–191.
- Rinterknecht, V.R., Clark, P.U., Raisbeck, G.M., Yiu, F., Bitinas, A., Brook, E.J., Marks, L., Zelčs, V., Lunkka, J.-P., Pavlovskaya, I.E., Piotrowski, J.A., Raukas, A., 2006. The last deglaciation of the southeastern sector of Scandinavian ice sheet. *Science* 311 (5766), 1449–1452.

- Rinterknecht, V., Matoshko, A., Gorokhovich, Y., Fabel, D., Xue, S., 2011. Expression of the Younger Dryas cold event in the Carpathian Mountains, Ukraine? *Quat. Sci. Rev.* 39, 106–114.
- Rybníčková, E., Rybníček, K., 1996. Czech and Slovak Republics. In: Berglund, B.E., Birks, H.J.B., Ralska-Jasiewiczowa, M., Wright, H.E. (Eds.), *Palaeoecological Events during the Last 15,000 Years: Regional Syntheses of Palaeoecological Studies of Lakes and Mires in Europe*. Wiley, Chichester, pp. 473–505.
- Schaub, M., Büntgen, U., Kaiser, K.F., Kromer, B., Talamo, S., Andersen, K.K., Rasmussen, S.O., 2008. Lateglacial environmental variability from Swiss tree rings. *Quat. Sci. Rev.* 27 (1–2), 29–41.
- Schwander, J., Eicher, U., Ammann, B., 2000. Oxygen isotopes of lake marl at Gerzensee and Leysin (Switzerland), covering the Younger Dryas and two minor oscillations, and their correlation to the GRIP ice core. *Palaeogeogr. Palaeoclimatol. Palaeoecol.* 159 (3–4), 203–214.
- Šebesta, J., Treml, V., 1976. Glacienní a nivační modelace údolí a údolních závěrů Krkonoš. *Opera Corcon.* 13, 7–44.
- Sekyra, J., 1964. Kvartémně geologické a geomorfologické problémy krkonošského krystalinika. *Opera Corcon.* 1, 7–24.
- Skrzypek, G., Jedrysek, M.O., 2005. $^{13}\text{C}/^{12}\text{C}$ ratio in peat cores: record of past climates. In: Lichtfouse, E., Schwarzbauer, J., Robert, D. (Eds.), *Environmental Chemistry: Green Chemistry and Pollutants in Ecosystems*. Springer, Berlin, pp. 65–74.
- Speranza, A., van der Plicht, J., van Geel, B., 2000. Improving the time control of the Subboreal/Subatlantic transition in a Czech peat sequence by ^{14}C wiggle-matching. *Quat. Sci. Rev.* 19 (16), 1589–1604.
- Stamberger, R., Rodnight, H., Spötl, C., 2011. Chronology of the Last Glacial Maximum in the Salzach Palaeoglacial Area (Eastern Alps). *J. Quat. Sci.* 26 (5), 502–510.
- Stone, J.O., 2000. Air pressure and cosmogenic isotope production. *J. Geophys. Res. Solid Earth* 105 (B10), 23753–23759.
- Svobodová, H., 2004. Vývoj vegetace na Úpském rašeliništi. *Opera Corcon.* 41, 124–131.
- Traczyk, A., 1989. Zlodowacenie doliny Łomnicy w Karkonoszach oraz pogład na ilość zlodowaceń w średnich górach Europy. *Czas. Geogr.* 60 (3), 267–286.
- Traczyk, A., 2004. Late Pleistocene evolution of periglacial and glacial relief in the Karkonosze Mountains. *Acta Univ. Carol. Geogr.* 39 (1), 59–72.
- Traczyk, A., 2009. Zlodowacenie Śnieżnych Kotłów w Karkonoszach Zachodnich w świetle analizy morfometrycznej oraz GIS. *Opera Corcon.* 46, 41–56.
- Traczyk, A., Migoń, P., 2000. Cold-climate landform patterns in the Sudetes. Effect of lithology, relief and glacial history. *Acta U. Carol. Geogr., Suppl. Iss.* 35, 185–210.
- Treml, V., Jankovská, V., Petr, L., 2008. Holocene dynamics of the alpine timberline in the High Sudetes. *Biologia* 63 (1), 73–80.
- Tyráček, J., Havlíček, P., 2009. The fluvial record in the Czech Republic: a review in the context of IGCP 518. *Global Planet. Change* 68 (4), 311–325.
- van Husen, D., 1997. LGM and Late-glacial fluctuations in the Eastern Alps. *Quat. Int.* 38–39, 109–118.
- van Husen, D., 2011. Quaternary glaciations in Austria. In: Ehlers, J., Gibbard, P.L., Hughes, P.D. (Eds.), *Quaternary Glaciations – Extent and Chronology*. Elsevier, Amsterdam, pp. 15–28.
- Vermeesch, P., 2012. On the visualisation of detrital age distributions. *Chem. Geol.* 312–313, 190–194.
- Vescovi, E., Ravazzi, C., Arpent, E., Finsinger, W., Pini, R., Valsecchi, V., Wick, L., Ammann, B., Tinner, W., 2007. Interactions between climate and vegetation during the Lateglacial period as recorded by lake and mire sediment archives in Northern Italy and Southern Switzerland. *Quat. Sci. Rev.* 26 (11–12), 1650–1669.
- Wacnik, A., 2009. Vegetation development in the Lake Miłkowskie area, north-eastern Poland, from the Plenivistulian to the late Holocene. *Acta Palaeobot.* 49 (2), 287–335.
- Walker, M.J.C., Björck, S., Lowe, J.J., Cwynar, L.C., Johnsen, S., Knudsen, K.-L., Wohlfahrt, B., 1999. Isotopic events in the GRIP ice core: a stratotype for the Late Pleistocene. *Quat. Sci. Rev.* 18 (10–11), 1143–1150.
- Wennrich, V., Wagner, B., Melles, M., Morgenstern, P., 2005. Late Glacial and Holocene history of former Salziger See, Central Germany, and its climatic and environmental implications. *Int. J. Earth Sci.* 94 (2), 275–284.
- Werth, E., 1901. Zur Kenntnis des Diluviums im nördlichen Riesengebirge. *Neues Jahrb. Mineral.* 1, 89–98.
- Wicik, B., 1986. Asynchronizność procesów wietrzenia i sedymentacji w zbiornikach jeziornych Tatr i Karkonoszy w postglaciale. *Prz. Geogr.* 58 (4), 809–823.
- Žáčková, E., Konopásek, J., Košler, J., Jeřábek, P., 2011. Detrital zircon populations in quartzites of the Krkonoše–Jizera Massif: implications for pre-collisional history of the Saxothuringian Domain in the Bohemian Massif. *Geol. Mag.* 149 (3), 443–458.
- Zimmerman, S.G., Evenson, E.B., Gosse, J.C., Erskine, C.P., 1994. Extensive boulder erosion resulting from a range fire on the type-Pinedale moraines, Fremont Lake, Wyoming. *Quat. Res.* 42 (3), 255–265.
- Zreda, M., Phillips, F.M., 1995. Insights into alpine moraine development from cosmogenic ^{36}Cl build up dating. *Geomorphology* 14 (2), 149–156.
- Zuber, A., Weise, S.M., Motyka, J., Osenbrück, K., Róžański, K., 2004. Age and flow pattern of groundwater in a Jurassic limestone aquifer and related Tertiary sands derived from combined isotope, noble gas and chemical data. *J. Hydrol.* 286 (1–4), 87–112.